



**New Jersey Department of Transportation**  
Division of Civil Rights and Affirmative Action  
**Americans with Disabilities Act**  
**Section 504 Program Implementation Report**  
**AND**  
**FY2024**  
**TRANSITION PLAN**



**Philip D. Murphy**  
Governor

**Francis K. O'Connor**  
Commissoner

# TABLE OF CONTENTS

<b>1.0</b>	<b>INTRODUCTION AND BACKGROUND</b>	<b>6</b>
1.1	FRAMEWORK FOR ADA COMPLIANCE	7
<b>2.0</b>	<b>STEP 1 FUFILLING ADMINISTRATIVE REQUIREMENTS</b>	<b>8</b>
<b>3.0</b>	<b>STEP 2 CONDUCTING A SELF ASSESSMENT</b>	<b>9</b>
<b>4.0</b>	<b>STEP 3 DEVELOPING A TRANSITION PLAN</b>	<b>11</b>
4.1	PLAN ELEMENTS	11
4.2	PROJECTS COVERED BY ADA AND SECTION 504	12
4.3	INTEGRATION OF TRANSITION PLAN	12
4.4	REVIEW PROCESS	13
4.4.1.	INTERNAL REVIEW	13
4.4.2.	EXTERNAL REVIEW	13
4.4.3.	FUTURE PLAN UPDATES	14
4.5	MEASURING PROGRESS	14
<b>5.0</b>	<b>STEP 4 STATUS OF COMPLIANCE</b>	<b>16</b>
5.1	ADMINISTRATIVE REQUIREMENTS OF ADA	16
5.1.1.	DESIGNATION OF ADA COORDINATOR	16
5.1.2.	NOTICE OF ADA REQUIREMENTS	17
5.1.3.	GRIEVANCE PROCEDURE	18
5.1.4.	ADA ASSURANCE TO FHWA	19
5.2	DEPARTMENTAL COORDINATION	20
5.2.1.	ADA WORKING GROUP	20
5.2.2.	ADA TASK FORCE ON PROWAG FINAL RULE	20
5.2.3	NJDOT WEB ACCESSIBILITY	21
5.3	INTERACTIVE PROCESS	22
5.3.1.	GENERAL REQUIREMENTS	22
5.3.2.	TRAINING, AWARENESS AND OUTREACH	22
5.3.3.	PROGRAM AND FACILITY ACCESSBILITY	25
5.3.4.	COMMUNICATIONS	26
5.3.5.	REVISION OF DOCUMENTS FOR ADA COMPLIANCE	26
5.3.6.	NJDOT POLICIES AND PROCEDURES	27
<b>6.0</b>	<b>STRATEGIES TO ENSURE COMPLIANCE</b>	<b>28</b>

6.1	ACCESSIBILITY .....	28
6.2	PROJECTS AND COMPLIANCE.....	28
6.2.1.	ADDRESSING NON-COMPLIANCE .....	29
6.2.2.	ADA PROJECTS AND CONTRACTS.....	29
6.3	ACCELERATED RIGHT OF WAY PROCESS FOR SIDEWALKS.....	39
7.0	ACTIVITIES.....	39
7.1	IMMEDIATE ACTIVITIES 2024.....	40
7.2	SHORT-TERM ACTIVITIES (2 TO 3 YEARS).....	42
7.3	INTERMEDIATE-TERM ACTIVITIES (4 TO 6 YEARS) .....	42
7.4	LONG-TERM ACTIVITIES (7 TO 10 YEARS).....	42
7.5	FUNDING OPPORTUNITIES.....	43
8.0	CONCLUSION .....	43
	APPENDICES.....	44
	APPENDIX A - NOTICE UNDER THE ADA.....	45
	APPENDIX B - THE NOTICE OF NONDISCRIMINATION .....	46
	APPENDIX C - GRIEVANCE PROCEDURE.....	47
	APPENDIX D - COMPLAINT FORM .....	48
	APPENDIX E - ADA ASSURANCE TO FHWA.....	49
	APPENDIX F - PUBLIC INVOLVEMENT AND COMMUNITY ENGAGEMENT PROCESS.....	50
	APPENDIX G - FACILITIES ADA SITE INSPECTIONS.....	51
	APPENDIX H - NJDOT POLICIES AND PROCEDURES, COMPLETE STREETS .....	52
	APPENDIX I - NJDOT POLICIES AND PROCEDURES, ACCOMODATING PEDESTRIANS AND BICYCLE TRAFFIC DURING CONSTRUTION.....	53
	APPENDIX J - TECHNICALLY INFEASIBLE FORM (TIF - 1) .....	54
	APPENDIX K - PEDESTRIAN AND BICYCLE FUNDING OPPORTUNITIES: US DEPARTMENT OF TRANSPORATION TRANSIT, SAFETY, AND HIGHWAY FUNDS, SEPTEMBER 9, 2022 .....	55

# **NEW JERSEY DEPARTMENT OF TRANSPORTATION**

## **ADA/SECTION 504 IMPLEMENTATION and TRANSITION PLAN**

### **EXECUTIVE SUMMARY**

Improving lives by Improving Transportation is the New Jersey Department of Transportation's formula for its mission. Our mission is advanced throughout our organization and funded by our Capital and Statewide Transportation Improvement Programs with a mix of State, Federal and third-party funding which supports the continuation of our roadway improvement projects.

As transportation is important to most life activities, and as a recipient of Federal funding, NJDOT is committed to ensure that all individuals have an opportunity to access our transportation systems and facilities; and further assures nondiscrimination in all of its programs, activities and services.

More importantly and the focus of our transition plan are the unique needs of our disability communities. Nearly 20 percent of the United States' population is comprised of people who have disabilities; and the number continues to grow. Previously those with disabilities were not necessarily considered general participants in daily life activities or major contributors in our communities. Section 504 of the Rehabilitation Act was established in 1973 to protect individuals with disabilities from discrimination based on their disability. Additionally, in July 1990, the Americans with Disabilities Act was signed into law and provided even greater support to individuals with disabilities and their integration into the mainstream of American life. These laws helped to change the way society considered persons with disabilities and ultimately the way we do business and serve the public.

Section 504 of the Rehabilitation Act of 1973 (Section 504) and Title II of the Americans with Disabilities Act of 1990 (ADA) work together to ensure that public rights-of-way and facilities are accessible to persons with disabilities. Section 504 and the ADA were specifically passed to confirm and mandate that public agencies make certain assurances that persons with disabilities are not discriminated against in the delivery of their services, programs, or activities. More specifically, and as an example of compliance with these laws, NJDOT must make provisions for pedestrians with disabilities to ensure their safe access to our streets and sidewalks by installing structures such as curb cuts, ramps, continuous sidewalks, and detectable warnings where pedestrian facilities exist.

All of our newly constructed and altered roadways conform to Section 504, ADA and include safety and accessibility features. However, given the age of our overall transportation system; and that many roadways and facilities were constructed prior to 1990, it would be unreasonable and even cost prohibitive to reconstruct the transportation system for immediate compliance with these fairly new regulations. Consequently, standards and rules were developed to provide the guidance necessary to assist public agencies like the NJDOT to gradually transition and work towards reaching full compliance with the ADA. Thus, the basis and mandate for NJDOT's ADA Transition Plan, which was initially established and published in 1991. The ADA Transition Plan is developed and managed by the Division of Civil Rights and Affirmative Action's Title VI/Nondiscrimination Unit. As we continue to develop and improve our statewide transportation system, this plan sets forth the steps we have taken and continue to take in order to achieve compliance with the law and ensure full accessibility to individuals with disabilities.

For the convenience of our stakeholders including NJDOT organizations required to carry out ADA obligations, local government agencies, advocacy groups, and the public, the following program and plan is provided in two parts. The first includes the summary of the regulations, standards and guidelines established, which we have also applied and continue to reference for compliance and transition purposes. We provide this information, particularly to reiterate the requirements and to present one, convenient location for ADA information for our internal and external stakeholders.

The second portion of the plan essentially lays out an updated version of planned and proposed details and identifies the physical obstacles that continue to limit the accessibility of our programs or activities. This section updates and describes the ongoing methods we continue to use to make our facilities accessible; provides, where required, the updated schedule or plan we are using to update and improve our pedestrian access to meet Section 504 and ADA requirements; and presents an update of advancements and accomplishments since the inception of our formal transition plan and/or the last update.

Finally, we continue to collaborate with the public and particularly the disabled community by conducting and participating in outreach events and soliciting for their input when updating our transition plan. Our goal is to work with all stakeholders to improve accessibility in NJDOT's transportation programs.

# **PART 1**

## **Regulations, Guidelines and Requirements**

## 1.0 INTRODUCTION AND BACKGROUND

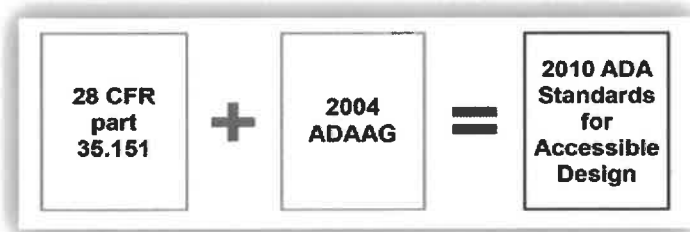
The Americans with Disabilities Act (ADA) of 1990 – also referred to as the “Act” or “ADA” – is a Federal, civil rights law prohibiting discrimination against persons with disabilities through five, separate titles; and similar to the Civil Rights Act of 1964 each title targets a different aspect of protection from potential discrimination as follows:

<b>Title I</b>	Employment
<b>Title II</b>	State and Local Government Services
<b>Title III</b>	Public Accommodations
<b>Title IV</b>	Telecommunications
<b>Title V</b>	Miscellaneous Provision

Title II of the Act (42 U.S.C. §§12131-12164) specifically addresses accessibility to public services and public transportation by persons with disabilities. On September 15, 2010, the Department of Justice (DOJ) issued amended rules for Titles II and III of the ADA. These rules established requirements for public agencies under the *2010 ADA Standards for Accessible Design*, (“2010 Standards” or “Standards”). The 2010 Standards formed minimum requirements for newly designed and constructed or altered facilities, public accommodations, and commercial facilities to be readily accessible to and functional for individuals with disabilities.

The DOJ acceptance of the 2010 Standards also sets a revised reference point for Title II entities that choose to make physical changes to existing facilities to meet their program accessibility requirements; and it establishes a similar reference for Title III entities undertaking readily achievable barrier removal.

State and local government facilities must follow the 2010 Standards, including both the Title II regulations at 28 CFR 35.151 (new construction and alterations) and the 2004 Americans Disability Act Accessibility Guidelines (ADAAG) at 36 CFR Part 1191, Appendices B and D. Public rights-of-way and facilities are required to be accessible for all users, regardless of funding source. Where the requirements between the two differ, the requirements of 28 CFR 35.151 will prevail.<sup>1</sup>



As for an effective date of Title II of the ADA and as provided in the Standards, if construction begins on or after March 15, 2012, all newly constructed or altered State and

---

<sup>1</sup> September 15, 2010, USDOJ ADA Standards for Accessible Design  
NJDOT ADA TRANSITION PLAN 2024

local government facilities must meet the terms of the 2010 Standards. However, if the start of project construction began on or after September 15, 2010, but before March 15, 2012, the 1991 Standards (without the elevator exemption), the Uniform Federal Accessibility Standards (UFAS) or the 2010 Standards may be applied.

To summarize, Title II of the ADA requires public agencies to make provisions necessary to ensure people with disabilities have access to their programs, activities and services. However, public agencies must develop an approach to compliance that best suits its programs, processes and the communities it serves. Federal regulations, guidelines as well as the Standards were developed to provide specific guidelines to help agencies meet the requirements of the law.

It should be noted, however, that as a recipient of U.S. Department of Transportation (Federal) funding, and in accordance with Federal regulation, 49 CFR Part 27 (Nondiscrimination on the Basis of Disability in Programs or Activities Receiving Federal Financial Assistance), State Departments of Transportation may not directly or through contractual or other provisions discriminate on the basis of disability. As it relates to State Departments of Transportation (DOT), the DOJ assigned oversight responsibility for ensuring compliance with ADA regulations (28 CFR Par 35.190) to the US Department of Transportation, Federal Highway Administration (hereafter referred to as “FHWA”). As such, FHWA is responsible for overseeing, ensuring and monitoring State DOT’s compliance with ADA to include Self-Evaluation and the development and maintenance of Transition Plans. Specifically, all State DOTs are required to have established an ADA Transition Plan, which is used to demonstrate and record that existing facilities are being brought into compliance with the Act. The Transition Plan is periodically updated to confirm and document progress until full compliance with ADA requirements is achieved.

## **1.1 FRAMEWORK FOR ADA COMPLIANCE**

According to the Standards, when comparing public agencies required to comply with Title II of the ADA and Section 504 of the Rehabilitation Act of 1973 (Section 504), State Departments of Transportation face exceptional challenges in meeting ADA accessibility obligations of the facilities they own and manage. The sheer size and geographic extent of a DOT’s coverage can easily comprise thousands of miles of public rights-of-way, magnifying the difficulty and cost in funding and efforts to achieve, maintain, and track compliance over time. The handbook entitled “*ADA Transition Plans: A Guide to Best Management Practices*” hereinafter referred to as “the Guide” recognizes these challenges and offers a good foundation to achieve compliance through a phased, step-like approach of demonstrated activities and accomplishments over time.<sup>2</sup>

---

<sup>2</sup> NCHRP Report 20-7 (232), *ADA Transition Plans: A Guide to Best Management Practices*, National Academy of Sciences, National Cooperative Highway Research Program, May 2009.



In summary, the Guide outlines seven specific steps for achieving compliance with ADA standards with respect to the accessibility of facilities in the public right-of-way. These steps have been reorganized into the following, four functional areas:

**Step 1:** Addresses the administrative requirements of the ADA program by designating a staff person responsible for coordination of compliance; provide notice to the public on ADA policy and assurance; and adopt procedures for resolving complaints in a prompt and effective manner.

**Step 2:** Involves the performance of a self-assessment (“Self-Evaluation”) to determine ADA compliance and findings of non-compliance, including internal and external processes; and assessments on the condition of managed facilities.

**Step 3:** The development of an implementation plan (“Transition Plan”) to improve ADA accessibility and compliance with Title II and Section 504 through several required elements: Identifying physical obstacles in the agency's facilities that limit the accessibility of its programs or activities to individuals with disabilities; describing the methods (e.g., installation of curb ramps/facility wheelchair ramps, pedestrian push buttons, etc.) that will be used to make the facilities accessible; specifying the schedule for implementation of the necessary steps to transition, such as remove barriers and upgrade pedestrian access to meet ADA and Section 504 requirements in each year following the transition plan; and identifying the official responsible for implementation of the plan. 28 CFR §35.150(d) (3). (9-12-06).

**Step 4:** Monitor and oversee progress of the implementation plan; conduct regular updates to ensure the plan and its priorities are valid, and compliance efforts are effective and properly directed. Solicit the disability community and other interested individuals/groups for their input.

## **2.0 STEP 1**

### **FUFILLING ADMINISTRATIVE REQUIREMENTS**

Each State DOT must set up a basic program that meets the administrative requirements of the ADA. The basic elements of the program include the following:

#### **Designation of an ADA Coordinator**

Each DOT must appoint one, responsible staff person to coordinate ADA compliance with Title II across the agency, investigate ADA/504 complaints, and serve as a sole source for internal and external ADA information. This person should also connect and communicate with local governments, advocacy groups, and the public; and be dedicated full-time to advancing compliance plans within the department.

#### **Notice to Public Regarding ADA Requirements**

ADA's assurance of program accessibility requires that services and programs offered by public entities, including DOTs be fully accessible to and usable by individuals with disabilities and further requires that individuals with disabilities not be excluded because of limitations on access. Various methods of ensuring program accessibility include redesign/alteration of facilities, relocation of services or programs to an accessible location

in a facility or to an accessible facility altogether. An important aspect of accessibility is the requirement to notify the public about ADA, the agency's responsibilities, and status on compliance. The provision to notify the public about their rights under the ADA is a continuing responsibility of DOT. Nevertheless, it is up to the agency itself to determine the most effective method(s) to carry out this goal, which should be centered on the way the agency does business and communicates with the public, including individuals with disabilities and organizations representing individuals with disabilities.

Generally speaking, and as provided in the guidelines and standards, the target audience for the public notice should be expansive and be aimed at anyone who currently interacts or could potentially interact with DOT, including applicants, beneficiaries or any persons interested in DOT's programs, activities, or services. The notice should include information about Title II of the ADA, the rights and protections of those with disabilities, and how the ADA applies to the programs, services and activities of the DOT. Information communicated must be accessible to all, and therefore be provided in alternative formats including audio tape, large print, Braille, HTML website format, and in other languages, as necessary.

### **Adoption and Publishing Grievance Procedures**

So that complaints of disability discrimination are resolved in a prompt and reasonable manner, DOTs are required to adopt and publish its procedures used to resolve grievances that may arise from Title II of the ADA. Once developed, the grievance procedure should be provided on the DOT's (internet) website; it should be posted in conspicuous locations throughout the DOT offices; and communicated to staff so that they may direct matters timely and appropriately when received. Again, it is important that grievance procedures be available in alternative formats to ensure full accessibility to people with disabilities.

While Title II and its implementing regulations do not specify what the ADA grievance procedures must include, the DOJ has developed a model that includes the following components:

- A description of how and where an ADA complaint may be filed;
- Where written complaints are required, a statement notifying potential complainants that alternative means of filing a complaint will be available for people with disabilities, if necessary;
- A description of the timeframes and processes to be followed by complainant and government entity;
- Information on how to appeal an adverse decision; and
- A statement of how long complainant files will be retained by the agency.

## **3.0 STEP 2 CONDUCTING A SELF ASSESSMENT**

Before developing a Transition Plan, DOTs must complete a Self-Evaluation, or inventory of existing physical barriers in facilities managed by the agency and a listing of all barriers

that limit accessibility. Possible ways to collect this inventory include on-ground surveys, windshield surveys, aerial photo studies, and drawings.

An Accessibility Barriers Checklist provided in the Guide highlights several areas where deficiencies are likely to be found, as shown in the table below:

*Table 1 – ACCESSIBILITY BARRIERS CHECKLIST<sup>3</sup>*

<b>ISSUE</b>	<b>POSSIBLE BARRIER</b>
<b>Sidewalk and Pathway Clear Width</b>	Narrow, Below Guidelines
<b>Sidewalk and Pathway Cross Slope</b>	Steepness, Irregularity, Variability, Warping
<b>Landings Along Sidewalks and Pathways</b>	Less Than 4 feet by 4 feet
<b>Sidewalk and Pathway Grade</b>	Steepness, Angle Points
<b>Materials and Finishes</b>	Deterioration of Surfaces, Deterioration of Markings, Appropriateness of material (exp. Cobblestones)
<b>Gratings</b>	Grating Type, Grate Opening Orientation
<b>Discontinuities</b>	Missing Sections, Gaps, Drops, Steps
<b>Detectable Warning System</b>	Missing, Inappropriate Materials, Inadequate Size, Wrong Location
<b>Obstructions</b>	Signs, Mailboxes, Fire Hydrants, Benches, Telephones, Traffic Signal Poles, Traffic Signal Controller Boxes, Newspaper Boxes, Drainage Structures, Tree Grates, Pole Mounted Objects, Standing Water, Snow or Ice
<b>Traffic Signal Systems</b>	Lack of Provision for the Visually Impaired such as APS, Inadequate Time Allowed, Inoperable Buttons, Inaccessible
<b>Curb Ramp</b>	Missing, Does not Fall within Marked Crosswalk, Doesn't Conform to Guidelines
<b>Curb Ramp Flares</b>	Missing Where Required, Too Steep

According to the standards and guidelines, developing an inventory of physical barriers that limit accessibility is the most challenging, but critical part of the transition process. These challenges are due, primarily to the time required, budgetary demands and staffing necessary to fully undertake and complete this time-consuming and vital task.

<sup>3</sup> Source: NCHRP Report 20-7 (232), *ADA Transition Plans: A Guide to Best Management Practices*, National Academy of Sciences, National Cooperative Highway Research Program, May 2009.

Consequently, the Best Practices Guide recommends the following, potential approaches for DOTs to move forward in this essential endeavor:

- Identify dedicated funds and staff prior to commencing the Self- Evaluation phase and activities.
- Divide the effort into two, separate inventories. One uniquely identified for buildings and one for the right-of-way, so that a segment of the compliance effort can be advanced on a more accelerated schedule.
- Use a phasing and prioritization approach to focus the first stages of the inventory effort on the areas found as most important based on criteria such as high pedestrian traffic areas or those areas more commonly used by pedestrians with disabilities.
- Divide the inventory process across regions or districts, with each region/district being responsible for Self-Evaluation and development of its own transition and individual Transition Plan specific to its geographic area.

## **4.0 STEP 3 DEVELOPING A TRANSITION PLAN**

Once the Self-Evaluation is completed and an inventory of required modifications to achieve accessibility is conducted, a plan is developed for removing the identified barriers where they exist. While there is considerable variation between Transition Plans that exist across State DOTs, each plan must cover at least four required elements. The primary elements include a) a Self-Evaluation inventory; b) discussion of the best, cost effective methods to remove barriers and improve accessibility; c) a schedule for implementing steps toward achieving compliance; and d) identification of employee(s) responsible for overseeing the plan's implementation. Including the public and making the plan available for public review and inspection is also required.

While all accessibility issues are critical to the ADA, curb ramps receive special attention and consideration in the Transition Plan because they are a vital part of enhancing the public right-of-way and making it safer and accessible for people with disabilities. Addressing curb ramps include modification of sidewalks, street crossings, and other pedestrian routes to improve accessibility. Consequently, the Transition Plan specifically requires DOTs to develop a separate schedule that deals with constructing, altering correcting and/or remediation of curb ramp issues.

### **4.1 PLAN ELEMENTS**

In accordance with 28 CFR §35.150(d)(3) and Title II, the transition process, at minimum, should accomplish the following tasks, which should also be recorded in the Transition Plan:

- Identify physical obstacles in a public agency's facilities that limit the accessibility of its programs or activities to individuals with disabilities.

- Describe in detail the methods that will be used to make the facilities accessible.
- Specify the schedule for taking the steps necessary to upgrade pedestrian access to meet ADA and Section 504 requirements in each year following the Transition Plan.
- Include a schedule for providing curb ramps or other sloped areas where pedestrian walks cross curbs, giving priority to walkways serving entities covered by Title II, including State and local government offices and facilities, transportation, places of public accommodation, and employers, followed by walkways serving other areas.
- Identify the official(s) responsible for implementation of the plan.
- Provide opportunities for interested persons and groups to participate in the development of the plan, including the Self-Evaluation process.

## **4.2 PROJECTS COVERED BY ADA AND SECTION 504**

Any project for construction or alteration of a facility that provides access to pedestrians must be made accessible to persons with disabilities. Projects that alter the use of the public right-of-way (i.e., any changes that affect or could affect access, circulation, or use by affecting the structure, grade, or use of the roadway) must incorporate pedestrian access improvements within the project scope that meet ADA and Section 504 requirements.

Alterations include reconstruction, major rehabilitation, widening, resurfacing, signal installation and upgrades, and projects of similar scale and effect<sup>4</sup>.

According to the DOJ and FHWA, maintenance activities are not considered alterations. Examples of jobs that would generally be considered maintenance include painting or striping lanes, crack filling and sealing, surface sealing, chip seals, slurry seals, fog seals, scrub sealing, joint crack seals, joint repairs, dowel bar retrofit, spot high-friction treatments, diamond grinding, and pavement patching.<sup>5</sup>

## **4.3 INTEGRATION OF TRANSITION PLAN**

The purpose of the Transition Plan is to identify system needs and integrate them with the State's planning process through the Statewide Transportation Improvement Program (STIP) and Metropolitan Transportation Improvement Program (TIP). More specifically, an effective Transition Plan is applied in and directly tied to the annual planning of projects and corresponding funding decisions.

Accessibility improvements can be incorporated into the transportation program in a number of different ways, some of which include the following:

- Any programmed construction projects must meet accessibility requirements when built;

---

<sup>4</sup> Source: Federal Highway Administration Office of Civil Rights, "Questions and Answers About ADA/Section 504" accessed at: [https://www.fhwa.dot.gov/civilrights/programs/ada/ada\\_sect504qa.cfm](https://www.fhwa.dot.gov/civilrights/programs/ada/ada_sect504qa.cfm)

<sup>5</sup> USDOJ-FHWA Technical Assistance dated 6-28-2013

- Accessibility improvements identified in the Transition Plan that are not within the scope of an alteration project should be incorporated into the overall transportation planning process, even as stand-alone projects; and
- When scheduling maintenance activities, agencies should identify ADA accessibility needs and incorporate them into the overall transportation planning process.

#### **4.4 REVIEW PROCESS**

Transition Plans should be made available to and reviewed by at least three main groups of stakeholders:

- Internal stakeholders - DOT staff and internal individuals responsible for development and implementation of the plan.
- External stakeholders - FHWA, as part of its program, project, and investigative oversight role of Federal-aid recipients and sub-recipients.
- External groups and communities interested in ADA and accessibility, the public at large, including those assembled or identified by the DOT for providing input throughout the Self-Evaluation and Transition Plan development process.

##### **4.4.1. INTERNAL REVIEW**

Section 504 requires FHWA to monitor compliance of Federal-aid recipients (i.e., DOTs) with respect to their Self-Evaluation and Transition Plan activities to include internal reviews.

Agency staff should periodically review the Transition Plan through its Self-Evaluation process, which should take place both *prior to* and *following* completion of the plan. As previously expressed, Self-Evaluation activities are intended to gauge the level of existing compliance and determine the potential need to identify and include additional areas for accessibility improvements. Any identified deficiencies should be catalogued and included in future Transition Plan updates.

##### **4.4.2. EXTERNAL REVIEW**

As defined in the stewardship plan between the FHWA and DOTs, FHWA Division offices are tasked with reviewing pedestrian access compliance with the ADA and Section 504 as part of their routine oversight activities.

In addition to agency staff, public participation is a critical part of the ADA planning process. The public-at-large is a key stakeholder in ADA compliance and the agency's efforts to address barriers and make improvements through the Self-Evaluation and Transition Planning processes. Opportunities for participation in the Self-Evaluations that lead to the development of a Transition Plan should be publicized and targeted to members of the disabled community, interested persons, and other stakeholders. Potential stakeholders to target for participation in the review process include activists, advocacy groups, general citizens, organizations that support the rights of the disabled, elected officials, State-designated bodies or committees, or a State Ombudsman.

Potential sources for disseminating information and making requests for comments throughout the Self-Evaluation process include awareness days, newsletters, and information on the DOT website. Comments can be gathered through various means, including meeting comment forms, meeting transcriptions, a dedicated hotline, e-mail, or written correspondence addressed to the agency. Completed Self-Evaluation and Transition Plan documents are required to be available for public inspection and review.

#### **4.4.3. FUTURE PLAN UPDATES**

DOT should update and submit its Transition Plan annually and/or as needed to Federal Highway Administration to ensure that the document remains current and meets the needs of disabled persons. Since each plan is required to have an annual schedule that is ideally aligned with annual funding allocations through transportation planning and programming mechanisms, annual milestones should be adjusted regularly to reflect any changes in actual agency conditions.

#### **4.5 MEASURING PROGRESS**

The final step in achieving improvements in ADA compliance is continuous attention to incremental improvements and assessment on whether these enhancements are meeting the goals and targets set out in the Transition Plan schedule. The key for effective monitoring relies on establishing goals and targets by which to measure progress on an annual basis.

**PART 2**  
**NJDOT Transition Plan**  
**Update of Activities and Accomplishments**



## **5.0 STEP 4 STATUS OF COMPLIANCE**

This Section will describe the progress NJDOT has achieved to date in its Title II and Section 504 responsibilities. The department's current program and corresponding activities are aimed at making regular progress following the steps required in the planning processes outlined in Section 1.1 above labeled "Framework for ADA Compliance". Advancements to date include satisfying the administrative requirements of the program, engaging in departmental coordination efforts, sharing ADA information and guidance across divisions, and leading required activities (e.g., curb ramp inventory, training, outreach and education and assessment of best practices, etc.).

### **5.1 ADMINISTRATIVE REQUIREMENTS OF ADA**

Title II of the ADA requires public agencies to ensure that their programs, services and activities are accessible to individuals with disabilities. Entities with 50 or more employees must also designate at least one employee to coordinate compliance with the ADA regulations internally and externally. Designation of a formal ADA Coordinator is an important part of the Transition Plan and generally the first step in the ADA planning process. NJDOT has previously met this requirement as well as its obligation to provide notice to the public and announcements regarding the NJDOT established ADA grievance procedure.

#### **5.1.1. DESIGNATION OF ADA COORDINATOR**

NJDOT has designated and publicized its ADA Coordinator, contact information and responsibilities. The notice, as shown below, is also available in alternative formats to include large print and audio.

**NJDOT ADA/504 Coordinator:**

Chrystal Section  
New Jersey Department of Transportation  
Division of Civil Rights/Affirmative Action  
1035 Parkway Avenue  
Trenton, NJ 08625  
Main Office Building, second Floor  
(609) 963-2046 - Work  
(609) 530-4030 - Fax  
[chrystal.section@dot.nj.gov](mailto:chrystal.section@dot.nj.gov)

The ADA/504 Coordinator is charged with the responsibility for implementing, monitoring and ensuring the agency's compliance with Section 504 of the Rehabilitation Act of 1973, and the Americans with Disabilities Act of 1990. The functions performed by the ADA Coordinator are outlined below and include, but are not limited to the following:

- Preparing and updating a report of ADA/504 accomplishments and identifying problem areas to include in the Transition Plan.

- Monitoring the department's current policies and practices for implementing ADA/504.
- Identifying shortcomings in compliance and developing remedies.
- Updating complaint procedures as necessary to facilitate prompt resolutions of ADA complaints.
- Evaluating remedial steps taken to eliminate the effects of discrimination.
- Ensuring agency compliance with ADA/504.
- Collaborating and coordinating with the heads of major divisions and Departments to enable ADA/504 compliance efforts.
- Establishing and maintaining collaborative relationships with critical external stakeholders, such as disability advocacy groups and organizations.
- Monitoring the agency's ADA/504 Transition Plan to ensure that all department facilities remain in compliance with applicable accessibility standards and on schedule with its barrier removals.
- Monitoring established procedures to ensure that requested auxiliary aids are provided for persons with disabilities.
- Conducting annual reviews of ADA/504 program areas.
- Conducting ADA/504 training programs for agency managers and employees.
- Monitoring the preparation of ADA/504 information for dissemination to the public, including the "Notice to the Public" offer to provide reasonable accommodation upon request.
- Identifying, investigating, and eliminating ADA/504 discrimination when it is found to exist.

### **5.1.2. NOTICE OF ADA REQUIREMENTS**

There are two notices made available to members of the public – Notice under ADA and the Notice of Nondiscrimination.

NJDOT adopted the US Department of Justice model Notice under ADA (**Appendix A**) which includes brief statements about:

- Employment;
- Effective communication;
- Making reasonable modifications to policies and programs;
- Not placing surcharges on modifications or auxiliary aids and services; and
- Filing complaints.

The above information is provided to the public and local public agencies on an on-going basis. For example, NJDOT specifically notifies applicants for employment, customers and others interested in the NJDOT's programs, activities, or services of its compliance obligations and their rights under the ADA. NJDOT reaches these audiences by including these notices in its job applications, media outlets, at public information meetings, on its website and by posting announcements in conspicuous locations throughout its facilities and office locations.

The Notice of Nondiscrimination (**Appendix B**) affirms that the department's programs, services, activities, operations, and employment practices comply with all requirements of 49 CFR Part 27, 28 CFR §35 and 42 U.S.C. §12101-12213. The Notice also provides

contact information for the ADA Coordinator if questions, complaints, or requests for additional information arise. This document is designed to fulfill the requirements under 28 CFR §35.106, which states that:

“A public entity shall make available to applicants, participants, beneficiaries, and other interested persons information regarding the provisions of this part and its applicability to the services, programs, or activities of the public entity, and make such information available to them in such manner as the head of the entity finds necessary to apprise such persons of the protections against discrimination assured them by the Act and this part.”

### **5.1.3. GRIEVANCE PROCEDURE**

NJDOT has established a grievance procedure to address external, disability-based discrimination complaints entitled “Grievance Procedure under the Americans with Disabilities Act” (**Appendix C**). This Grievance Procedure outlines the steps necessary to report a complaint associated with the External ADA Program and includes details such as the person responsible for receiving complaints (ADA Coordinator); general procedures for resolving complaints; the timeframe within which to file a complaint; language expressly prohibiting retaliation; and an assurance of a prompt and full investigation. The right to an appeal of a complaint determination, as well as an alternative address for those wishing to file and/or direct their complaints to the USDOT, FHWA is also provided.

As expressed in the procedures, all grievances should be in writing and submitted to the ADA Coordinator within 180 days of the alleged violation. As required, the notice includes information on the availability of alternative means and formats for filing complaints, such as personal interviews or electronic recording devices. While the NJDOT Discrimination Complaint Form (**Appendix D**) is recommended, it is not required to be used to file a complaint, as alternative arrangements will be made for those requesting special accommodations.

The NJDOT Discrimination Complaint Form will collect the following information:

- Details on the party (ies) perpetrating the alleged discrimination;
- Details on the “Event” that caused the discrimination;
- The “relief” or “settlement” requested;
- Identification of witnesses, if applicable, and
- A request for the complainant’s signature, swearing or affirming that the charge is accurate and true.

Complaints received are recorded in the NJDOT ADA Complaint Log and shall be kept on file for a period of one year. A record of all such complaints, which may be in summary form, shall be kept for five years.

Complaint forms will be made available by contacting the ADA Coordinator and can be found on the NJDOT internet website.

ADA complaints will be examined by the ADA Coordinator; and upon receipt of a complaint, the ADA Coordinator will meet with the complainant to discuss the complaint

and possible resolutions. Within 120 days from acceptance, the complainant will receive a response, in writing or by other alternative means of communication, should an accommodation be requested. The response will explain the department's position in the matter and include a summary of the review, determination and/or resolution(s) to the complaint and provide any avenues for appeal, if available. If necessary and when applicable, a formal investigative report will be developed and include the following information:

- Complainant
- Respondent
- Issues/Allegations
- Applicable Law(s)
- Basis
- Findings
- Conclusion
- Recommendation(s)

Complaints or inquiries outside of the jurisdiction of NJDOT state-owned roadways and pedestrian facilities are directed to the proper county or municipality that owns and or maintains the site location. If the entity refuses to discuss the matter with complainant and it appears the location is non-compliant with the ADA, the NJDOT ADA Coordinator will contact the entity directly and advise the entity that public roadways and facilities within its jurisdiction must be ADA compliant. For the record, the ADA Coordinator will prepare a letter to the entity confirming receipt of the complaint or inquiry, what's at issue, the location, and its responsibility for ADA compliance including having an ADA Coordinator and ADA Transition Plan in place. If the entity does not have a transition plan, the NJDOT ADA Coordinator will provide ADA templates of transition plan requirements, ADA brochure, Notice Under the ADA, Notice of Nondiscrimination, Assurance, Grievance Procedures, and Complaint to the entity to assist it in achieving ADA compliance on property it owns and maintains.

#### **5.1.4. ADA ASSURANCE TO FHWA**

There are two sets of assurances for confirming oversight and compliance with ADA regulations, which are required to be included with applications for grants and contracts as a condition of receiving federal funding:

- NJDOT's assurance to FHWA as a recipient of federal financial assistance.
- Sub-recipients' assurances to NJDOT, for contracts through which they receive federal funding.

NJDOT's assurance (**Appendix E**) is incorporated into grant applications, contracts, or other instruments signed by and submitted to the NJDOT and/or the Federal Highway Administration (FHWA), as appropriate. As of October 2009, it is standard practice of the NJDOT to insert the Notice, or contents thereof, into its Professional Service Agreements and Construction Contracts. NJDOT takes steps to reasonably ensure all sub-recipients' programs are in compliance with ADA requirements and are not discriminatory regardless of the funding sources applied.

## **5.2 DEPARTMENTAL COORDINATION**

NJDOT recognizes the importance of cross-agency and departmental coordination of ADA matters. Therefore, in our efforts to identify, address and resolve ADA compliance issues and ensure greater departmental collaboration, we have instituted an ADA Working Group, on-going training and awareness to include identification of data and expertise-sharing opportunities across the agency. Also, in 2019, an ADA Work Type was added to the department's Project Management and Reporting System (PMRS). Specific functions in PMRS include automating the requests for project identifications, project job numbers, accepting electronic submittal of construction documents, automating the upload of capital project documents for individual projects, and capturing unlimited project location information such as Standard Route Identifier/Mile Post (SRI/MP) Limits, Structures, Railroad, etc.

### **5.2.1. ADA WORKING GROUP**

The NJDOT, Division of Civil Rights and Affirmative Action's Title VI Nondiscrimination Programs Unit, engages internal stakeholders on ADA related issues and concerns as needed and in accordance with which program areas may be affected and/or where issues may arise to assist in resolving non-compliance with the ADA. The ADA Working Group collectively represents various areas in the department and are considered Subject Matter Experts (SMEs) in their respective fields. The purpose of this group is to leverage the skills, experience, and expertise of staff on issues involving ADA compliance and accessibility on an as needed basis.

Members of the ADA Working Group currently include representatives from the following program areas:

- Civil Rights and Affirmative Action
- Design Standards
- Program Management
- Office of Community and Constituency Relations
- Project Management Office
- Right of Way
- Traffic Engineering
- Transportation Data & Support

In addition to leading and participating in the ADA Working Group, the ADA Coordinator participates in Scope and Core Team meetings to discuss and identify potential ADA concerns. The ADA Coordinator also attends project related field trips to be proactive, to maintain awareness of department projects where ADA issues may arise, and to ensure that ADA concerns are being considered and appropriately addressed.

### **5.2.2. ADA TASK FORCE ON PROWAG FINAL RULE**

The Architectural and Transportation Compliance Board (Access Board) issued its final rule on August 8, 2023, for the Accessibility Guidelines for Pedestrian Facilities in the Public Right-of-Way (PROWAG) which became effective on October 7, 2023, (see update NJDOT ADA TRANSITION PLAN 2024

[2023-19250.pdf \(govinfo.gov\)](#) and [Accessibility Guidelines for Pedestrian Facilities in the Public Right-of-Way](#). These guidelines are issued under Title II of the Americans with Disabilities Act of 1990 (ADA) and the Architectural Barriers Act of 1968 (ABA). Title II of the ADA applies to state and local government facilities, among others. The ABA applies to facilities constructed or altered by or on behalf of the Federal Government, facilities leased by Federal agencies, and some facilities built with Federal funds. It is recognized that this document is not the revised PROWAG guidelines, only what changes the US Access Board intends to make.

While this is the final rule from the US Access Board, both the Department of Justice and the Department of Transportation must develop their respective rulemaking processes and guidelines for compliance. These guidelines, once adopted, will ensure that facilities used by pedestrians, such as sidewalks and crosswalks, constructed or altered in the public right-of-way by federal, state, and local governments are readily accessible to and usable by pedestrians with disabilities. When the rules are adopted and published, with or without modifications, as with the accessibility standards in regulations issued by other federal agencies implementing the ADA, Section 504 of the Rehabilitation Act, and the ABA, compliance with the enforceable accessibility standards is mandatory.

On August 22, 2024, the United States Department of Transportation (DOT or “the Department”) published a [Notice of Proposed Rulemaking on Adoption of Accessibility Standards for Pedestrian Facilities in the Public Right-of-Way](#), proposing to amend its rules implementing the transportation provisions under the Americans with Disabilities Act (ADA). This notice proposes the adoption as regulatory accessibility standards the [Accessibility Guidelines for Pedestrian Facilities in the Public Right-of-Way \(PROWAG\)](#) issued by the Architectural and Transportation Barriers Compliance Board (Access Board) on August 8, 2023. This proposed rule would adopt the Access Board's PROWAG into the Department's ADA regulations. When adopted, DOT's public right-of-way ADA standards would apply only to new construction and alterations of transit stops in the public right-of-way.

DOT accepted comments on this NPRM through September 23, 2024, via the [Federal Register](#) (*Docket No. DOT-OST-2024-0090*).

Consequently, NJDOT is in the process of forming a department-wide task force composed of SMEs, which includes the ADA Coordinator, to review the guidelines and provide comments on the proposed changes to PROWAG. This effort will be led by the Division of Capital Program Support, Bureau of Design Standards.

### **5.2.3 NJDOT WEB ACCESSIBILITY**

Taking advantage of today's technology, the NJDOT Internet has evolved over the years and now provides a host of information and interactive services through its website, including links to other public websites that provide traveler information and transportation services.

NJDOT's website home page is located at [www.state.nj.us/transportation/](http://www.state.nj.us/transportation/) and provides access for all users. Information on ADA can quickly be accessed under “Transportation

Spotlights” by clicking on the International Symbol of Accessibility and Telecommunications Relays Service (TRS) icons.

The State of New Jersey through its NJ.GOV website provides a comprehensive statewide Accessibility Statement which is used by all state agencies. The State of New Jersey is committed to making information accessible to all, including individuals with disabilities. The State’s Accessibility Statement is presented at the bottom right side of the NJDOT home page. If accessibility issues arise while using any NJ.GOV website, users may click on the State website Statement and complete a form to report the problem by e-mailing the State of New Jersey Webmaster.

### **5.3 INTERACTIVE PROCESS**

The Americans with Disabilities Act of 1990 (Title II, 28 CFR §35.105) mandates NJDOT, as a public entity, perform periodic evaluations of its services, policies, and practices relating to accessibility for individuals with disabilities. The goal of the Self-Evaluation process is to review and assess the Department’s internal structures and processes for addressing ADA regulations, with particular emphasis placed on State roads, State highways, and State-owned facilities. Insights gained from this self-assessment are intended to serve as a baseline from which to develop a plan for improvement and corrections, which serves as the Transition Plan.

The Self-Evaluation framework covers three NJDOT functional areas: 1) General Requirements, 2) Program and Facility Accessibility, and 3) Communications. The summarized findings for each area are as follows:

#### **5.3.1. GENERAL REQUIREMENTS**

NJDOT has fulfilled general ADA requirements, including the designation of an ADA coordinator and publication of that individual’s contact information. In addition, we have provided our Notice of Nondiscrimination, developed an internal grievance procedure, and issued written assurance to the FHWA that the department will not discriminate based on disability. All documents relative to these requirements are available on the NJDOT Division of Civil Rights/Affirmative Action’s website for ADA which can be accessed at: <https://www.state.nj.us/transportation/business/ada/documents.shtm>

These documents are also disseminated to sub-recipients and general stakeholders during all training sessions and public meetings.

Copies of both the Self-Evaluation and Transition Plan are made available for review during ADA training sessions conducted for local counties, municipalities and consultants.

#### **5.3.2. TRAINING, AWARENESS AND OUTREACH**

To enhance awareness of and responsibility for ADA, training of internal staff and external sub-recipients is important. It is also NJDOT’s goal to monitor sub-recipients in the advancement of their obligations to ensure ADA. Our strategy is to oversee sub-recipients’ ADA compliance through training and information sharing as part of our ADA Public Involvement and Community Engagement Process (**Appendix F**).



During Calendar Years 2016-2018, training sessions were held with all 21 counties in New Jersey. These sessions covered ADA regulations and guidance on developing a Transition Plan. To confirm and verify that they have a plan in place, counties continue to submit their ADA Transition Plans to NJDOT for review and feedback, if applicable. As of 2021, the following 17 counties have submitted draft Transition Plans: Atlantic, Burlington, Camden, Cape May, Cumberland, Essex, Gloucester, Hudson, Middlesex, Monmouth, Morris, Ocean, Passaic, Salem, Somerset, Union and Warren. The remaining four counties, Bergen, Hunterdon, Mercer, and Sussex will submit their draft plans by Winter 2024. We will follow-up with all counties concerning any updates and/or reports on ADA activities.

The following are details about ADA training and NJDOT's Coordinator participation in work groups aimed at ADA communities during FY 2024:

**Table 2 - ADA TRAINING FISCAL YEAR 2024**

Class Name	# of Trainings	Total Attendees
<b>FHWA ADA Basics (FHWA Resource Center)</b>	<b>1</b>	<b>Virtual</b>
<b>ADA Design (Rutgers CAIT)</b>	<b>3</b>	<b>100</b>
Class	Date	# of Attendees
FHWA ADA Basics (FHWA Resource Center)	August 20, 2024	Virtual
Public Sidewalk Curb Ramp Design (Rutgers CAIT)	October 17, 2024	33
Public Sidewalk Curb Ramp Inspection (Rutgers CAIT)	June 25, 2024	36
Public Sidewalk Curb Ramp Design (Rutgers CAIT)	May 7, 2024	31

The FHWA Resource Center conducted an ADA Basics virtual training session on August 20, 2024. The training was aimed at NJDOT and local public agencies.

The two-hour basic ADA class answered many of the often-asked ADA/504 questions, and laid a solid foundation regarding State & Local Government responsibilities, including:

- Standards in the pedestrian environment, and for Buildings and on-site facilities,
- The Current Status of PROWAG,
- ADAAG v. PROWAG,
- Construction Tolerances, and
- Technical Infeasibility.



The substantive portion of the class was dedicated to Laws, Regulations and Pedestrian Characteristics, (which included self-evaluations, transition plans, and the DOJ-DOT Joint Technical Assistance on the Title II of the ADA Requirements to Provide Curb Ramps when Streets, Roads, or Highways are Altered through Resurfacing).

Rutgers University Center for Advance Infrastructure and Transportation (CAIT) conducted three training classes on ADA Design which included two “Public Sidewalk Curb Ramp Design” sessions on May 7, 2024, and October 17, 2024; and one session on “Public Sidewalk Curb Ramp Inspection” on June 25, 2024, for NJDOT staff, the disability community, consultants/contractors, public advocacy groups, and sub-recipients. A total of 100 internal and external individuals participated in the trainings.

Rutgers CAIT plans to conduct the following training classes on November 14, 2024, and November 30, 2024, respectively “Public Sidewalk Curb Ramps Inspection” and “Compliance to the ADA in the Public Right of Way”. Currently they have a total of 66 participants scheduled to attend.

#### NJ 2020 Strategic Highway Safety Plan (SHSP)

The ADA Coordinator participates as a team member on both the Pedestrian and Bicyclist Emphasis Area and Equity Emphasis Area. The goal of the SHSP is to reduce the number of crashes and eliminate deaths across state and local road systems. The development of the 2020 SHSP is a collaborative effort between state and local transportation agencies, law enforcement, emergency response, academia, healthcare, and other public and private sector transportation organizations working together. The FHWA mandates that every five years the SHSP plan be reevaluated. The prior plan was completed in 2015. The new plan will be implemented statewide to increase safety and reduce roadway deaths over the next five years.

#### Complete Streets, Autism Spectrum Disorder (ASD), and Intellectual and Developmental Disabilities (IDDs)

The ADA Coordinator was appointed to participate on the Governor’s Autism Task Force in 2018. As a result of the Autism Task Force findings, in January 2023, Governor Murphy signed legislation (Bill S-147) requiring NJDOT to implement a Complete Streets Policy to plan, design, construct, maintain, and operate new and rehabilitated public highways and transportation projects to provide safe access for all users, including bicyclists, pedestrians, transit riders, individuals with mobility impairments, persons diagnosed with autism spectrum disorder and persons with intellectual and developmental disabilities. Additionally, the bill also requires the department to develop universal design concepts that advance the mobility options for persons with intellectual and developmental disabilities and individuals diagnosed with autism spectrum disorder. To support and comply with this legislation, the Division of Statewide Planning, Bureau of Safety, Bicycle, and Pedestrian Programs (BSBPP), with support from consulting teams, will facilitate a working group, research best practices, and identify NJDOT policies, procedures, and documents that may need to be updated to comply with S147. This is part of a broader effort to update NJDOT’s Complete Streets Policy which is currently underway. The ADA

Coordinator serves on the working group which has had meetings on May 29, 2024, and September 15, 2023.

Rutgers University's Alan M. Voorhees Transportation Center (VTC) is developing a primer on the basics of autism, intellectual and developmental disabilities, and transportation needs. As part of the primer, VTC has assembled a working glossary of terms related to autism and intellectual and developmental disabilities. This glossary is just one piece of the larger primer, which is currently under development. Ultimately, the glossary and primer will serve as tools to support practitioners as they work to incorporate the needs of those with autism and intellectual and developmental disabilities in Complete Streets policies, planning, and implementation.

### **5.3.3. PROGRAM AND FACILITY ACCESSIBILITY**

NJDOT headquarters and regional facilities inventoried in the 2010 Self-Evaluation have been made accessible for all users. Due to inclement weather and the expectation of snowplows damaging detectable warning surfaces (DWS) on curb ramps, new DWS will be installed on curb ramps at all facilities, as needed.

The ADA Curb Ramp Inventory Data Base will be updated in 2024. The Division of Capital Program Management and Bureau of Transportation and Data Safety are involved in the coordination of updates on non-compliant locations. The projected completion dates for ADA compliance and ensuring locations are included on the Straight-Line Diagram (SLD). Updates to the database are done by the ADA Coordinator.

The ADA Coordinator works closely with the Department's Division of Support Services during major internal and external facility improvements and upgrades. The Division of Support Services includes our Facilities Planning, Engineering and Construction groups. The ADA Coordinator serves as a Subject Matter Expert (SME) on facility related working groups to ensure ADA is considered and appropriately addressed in newly created and upgraded building features. Support Services continues to be responsive to complaints regarding existing facilities. During this reporting period, ADA site inspections were conducted with Support Services staff and state ADA Coordinator David Millstein during July, August and September of Calendar Year 2023. Examined and discussed were deficiencies of ADA features at five NJDOT facilities: Trenton headquarters, Mount Arlington (North), Cherry Hill (South) regional facilities, and the two tourist welcome centers/rest areas, Knowlton and Carney's Point. A site inspection report was completed, and a prioritization schedule will be developed for the implementation of accessible features, including curb ramps, as appropriate (**Appendix G**).

#### ***Outreach and Education***

On October 9, 2024, the ADA Coordinator and staff participated as an exhibitor and information provider at the annual Middlesex County's annual *Disability Connections: Information and Resource Fair* hosted by the Department of Community Services Office of Aging & Disabled Services. Constituents were provided information about NJDOT's

ADA program's activities and services as they relate to providing accessible state roadway and pedestrian facilities.

Finally, through our ADA Public Involvement and Community Engagement Process, NJDOT's goal is to continue its public outreach to interested persons, including individuals with disabilities and/or organizations representing individuals with disabilities, to participate in the Self-Evaluation process by requesting contribution, feedback and comments, as applicable. Three major disability advocacy groups in New Jersey have been solicited for comments and contribution. Specifically, the New Jersey Council on Developmental Disabilities, Disabilities Rights New Jersey, and the Progressive Center for Independent Living were contacted to gauge potential constituent interest in providing input on accessibility issues on state roadways and public rights-of-way. These groups/agencies have also helped to disseminate meeting information to their agency staff, constituents, and other member networks they are involved with that may be interested in the information and topics covered by NJDOT's public outreach sessions on ADA.

#### **5.3.4. COMMUNICATIONS**

NJDOT provides auxiliary aids to program participants with disabilities and notifies the public of the availability of these aids. Furthermore, it was reported that the NJDOT website is compatible with software used by the hearing and visually impaired.

To identify vital factors for the successful implementation of various elements of a Transition Plan, several resources of best practices have been explored including:

- ❖ State DOT Transition Plans
- ❖ FHWA/Maryland State Highway Administration ADA Peer Exchange<sup>6</sup>
- ❖ US Department of Justice ADA Best Practices Tool Kit for State and Local Governments

#### **5.3.5. REVISION OF DOCUMENTS FOR ADA COMPLIANCE**

Two key documents - the NJDOT Design Manual-Roadway and the NJDOT Standard Roadway Construction Details – have been revised to integrate ADA requirements and standards into current NJDOT practices. After working with the FHWA, these documents received final approval. NJDOT formally issued these documents to the design community in 2015. In addition, the Department revised its Sample Plans to reflect examples of how to represent ADA design features on its plans for presentation to contractors for construction. These standards will be applied to the design of all appropriate Capital Projects, Maintenance Roadway Repair Contracts, and projects administered through the Department's Local Aid program.

---

<sup>6</sup> Maryland SHA Americans with Disabilities Act, Outreach Activities, Maryland State Highway ADA Peer Exchange Report, Accessed at:  
[http://www.sha.maryland.gov/OPR/MDSHA\\_ADA\\_Peer\\_Exchange\\_Rpt\\_FINAL.pdf](http://www.sha.maryland.gov/OPR/MDSHA_ADA_Peer_Exchange_Rpt_FINAL.pdf)

### 5.3.6. NJDOT POLICIES AND PROCEDURES

The NJDOT maintains policies and procedures for the purposes of providing consistency in operations, conveying management's philosophies, providing guidance in training and improving communications and productivity. Currently, there are two policies, which address safe access to all users within public rights of way:

**Complete Streets Policy (Policy No. 703) (Appendix H):** As a summary, the New Jersey Department of Transportation employs a Complete Streets policy through planning, design, construction, maintenance, and operation of new and retrofit transportation facilities. Complete Streets strategies enable safe access and mobility of pedestrians, bicyclists, and transit users of all ages and abilities. This includes all projects funded through the Department's Capital Program. In addition, the Department strongly encourages the adoption of similar policies by regional and local jurisdictions and particularly those who apply for funding through its Local Aid programs.

**Accommodating Pedestrian and Bicycle Traffic during Construction (Appendix I):** The Department is committed to increasing pedestrian and bicycle travel options and, where appropriate and safe, integrates bicycle and pedestrian accommodations into transportation systems to promote walking and bicycling as preferred travel modes for short trips. Under the Department's current procedures, bicycle and pedestrian needs and opportunities, (current and future), and how these needs and opportunities are to be incorporated into projects, are identified during the project development's planning and scoping phases.

It is recognized that construction related activities present an inconvenience and impediment to the maintenance of traffic for all modes of travel, including bicycle and pedestrian. Consequently, the Department's general bicycle and pedestrian policy obligates the Department's Project Management to provide safe access for bicycle and pedestrian traffic during the construction phase of capital improvements. NJDOT will apply its practices as appropriate; however, the Department acknowledges that it is not possible in all cases to spare the traveling public from such inconveniences and resulting impediments during construction.

The Department places a priority on the completion of permanent capital improvements that meet the needs of all lawful travel modes over the undertaking of costly and extraordinary measures during construction to maintain all modes of traffic. Such extraordinary measures not only consume scarce resources which could be used to implement permanent solutions to other needs but could also result in extending the duration of construction which then prolongs construction related travel impacts to the traveling public. A key means of mitigating construction related impacts for all modes is to lessen the duration of construction.

Decisions regarding the approach to maintain bicycle, pedestrian and motorized traffic during construction will be made on a case-by-case basis to respond to the unique circumstances presented for each project. Traffic related assessments and determinations will be made in cooperation and consultation with affected residents and local public officials. Appropriate means of accommodating bicycle and pedestrian traffic during

construction will be developed within the planning, scoping and design phases of project development and will become an integral element of the project construction plans.

## **6.0 STRATEGIES TO ENSURE COMPLIANCE**

The Transition Plan identifies, and updates ADA non-compliance issues captured in the Self-Evaluation process. The Department is taking a deliberate and strategic approach in assuring state highways and transportation facilities are in conformance with and/or targeted to be brought into compliance with the ADA. To ensure projects incorporate ADA features where required, NJDOT uses the U.S Department of Justice's 2010 Standards for Accessible Design and ADA Accessibility Guidelines for Buildings and Facilities (ADAAG). Additionally, ADA is now a primary consideration during the project planning phase and incorporated as applicable and required. Moreover, there are a number of independent projects the Department has planned or carried out for purposes of ensuring compliance with the ADA. The Department's goal is to provide full accessibility in state-owned transportation facilities for all persons living, working, or traveling (by any mode) in the State of New Jersey.

### **6.1 ACCESSIBILITY**

A Teletypewriter (TTY) Line/ Telecommunications Relay Service (TRS)<sup>7</sup> are available on NJDOT's internet website. One of the components of Title II focuses on removing barriers to effective communication. For persons who have hearing and speech disabilities, calling NJDOT is easy using TRS provided by NJ Relay. TRS is a free telephone service that allows persons with hearing or speech disabilities to place and receive telephone calls. TRS uses operators, called communications assistants (CAs), to facilitate telephone calls between people with hearing and speech disabilities and other individuals.

### **6.2 PROJECTS AND COMPLIANCE**

NJDOT Capital Program Support released Corrective Action Notice (CAN) Number 082 ("CAN082") to designers on June 28, 2012, updating its ADA design requirements. More specifically, CAN082 outlines revision to the Roadway Design Manual Subsection 5.7.4, Public Sidewalk Curb Ramps General. Many projects that were in design or construction had ADA related work added into the projects when the ADA work could not be completed within a reasonable time frame and cost. The department has since evaluated ADA compliance on all substantially completed projects as of July 1, 2012, through March 1, 2014. This evaluation process was accomplished through three, regionally assigned consultant Task Orders. An evaluation of current site conditions for compliancy was completed for every project that met the criteria. Projects that had not yet met compliancy were grouped into contracts within each region based upon many factors such as limits, number of non-compliant features, and complexity.

---

<sup>7</sup> TTY is the more widely accepted term; however, TTYs are used by many people, including those who are deaf. A TTY is a special device that allows people who are deaf, hard of hearing, or speech-impaired to use the telephone by allowing them to type messages back and forth to one another instead of talking and listening. A TTY is required at both ends of the conversation in order to communicate.

In February 2015, a federally participating group solicitation for ADA Retro-Fit Compliant Contracts was posted for preliminary engineering, final design, and construction engineering services for these and future ADA projects. The review process was completed, and the Designers selected in 2015. The Concept Development phase of work on the ADA Retro-Fit Compliant Contracts was comprised of a regional evaluation (North, Central, and South) of all projects that were substantially complete between July 1, 2012, and March 1, 2014. FHWA was an integral part of the team and deemed the approach and the final product acceptable.

As of 2023, based on the ADA Retro-Fit Compliant Contracts, a total of 3,938 curb ramps will be installed along state roadways.

### **6.2.1. ADDRESSING NON-COMPLIANCE**

#### *ADA Technically Infeasible Form (TIF-1)*

NJDOT's Division of Capital Program Support, Bureau of Design Services, with the assistance of the ADA Coordinator, created the ADA Technically Infeasible Form (TIF-1) (**Appendix J**). The TIF-1 is used for existing sites when it is deemed technically infeasible to construct pedestrian facilities to fully meet current ADA/504 standards. Individual non-compliant curb ramps are specified on separate forms. In alterations to existing facilities where full compliance with the ADAAG is technically infeasible, the alteration shall comply with these standards to the extent practicable. Designers must document the basis for their non-compliance determination using Form TIF-1. This form shall be completed and submitted to the Department as part of a project's Final Design Submission (FDS) and will be utilized in updating the Department's Transition Plan. Form TIF-1 and its instructions are available on the Department's website. Completed TIFs are available in the Roadway Standard Unit and Civil Rights/ADA Unit.

### **6.2.2. ADA PROJECTS AND CONTRACTS**

Regional contracts were established to bring projects into compliance with current ADA design requirements that could not be completed within the original design or construction time frame for the identified locations.

These contracts consist of 56 projects: *Region North* six (6), *Region Central* three (3), and *Region South* four (4). A total of 3,938 curb ramps will be installed along state roadways.

The subsequent updates were collected through the Project Management Reporting System (PMRS). Each project is listed by its Database (DB) number and/or Project Identification number.

## **REGION NORTH**

### **Project ID: 163080**

Projected Substantial Completion Date: 4/4/2024

Taft Ave. Pedestrian Bridge over Rt. 80

*Construction Type:* Bridge Replacement

*County:* Passaic

*Municipality:* Woodland Park Boro

*Project Phase:* Construction

*Number of curb ramps:* 2

### **Project ID: 163180**

Projected Substantial Completion Date: 6/1/2023

Rt. 46 Pequannock St. to CR 513 (West Main St)

*Construction Type:* Intersection Improvement

*County:* Morris

*Municipality:* Dover Township, Rockaway Twp

*Project Phase:* Final Design

*Number of curb ramps:* unknown

### **DB #15411 / Project ID: 154110 - ADA North, Contract 1**

Projected Substantial Completion Date: 10/3/2022

Rt I-80 EB Truck Weigh & Inspection Station

Rt 46 E of Forest Rd to W of Flanders Rd, Resurfacing

*Construction Type:* Pedestrian

*Counties:* Morris, Warren

*Municipality:* Mt. Olive Twp., Netcong Boro, Knowlton Twp.

*Project Phase:* Construction

*Number of curb ramps:* 88

### **DB #15412 / Project ID: 154120 - ADA North, Contract 2**

Actual Substantial Completion Date: 2/22/2023

Rt 284 Rt 23 to the New York State Line, Pavement

Rt 183 NJ Transit Bridge

Weldon Rd - Espanong Rd over Route 15

Rt 46 Section 7L & 8K

*Construction Type:* Pedestrian

*Counties:* Morris, Sussex

*Municipality:* Netcong, Sussex

*Project Phase:* Construction

*Number of curb ramps:* 92

### **DB #15414 / Project ID: 154140 - ADA North, Contract 4**

Projected Substantial Completion Date: 5/27/2022

Rt 10 WB Jefferson Rd to West Northfield Ave Pavement

Rt 10 EB, W of Harrison Av to E of West Northfield Ave

*Construction Type:* Pedestrian  
*Counties:* Essex, Morris  
*Municipality:* Various  
*Project Phase:* Construction  
*Curb ramps:* 114

**DB #15415 / Project ID: 154150 - ADA North, Contract 5**

Projected Substantial Completion Date: 9/30/2020  
*Construction Type:* Pedestrian  
*County:* Bergen  
*Municipality:* Lodi, Hackensack City, Hasbrouck Heights  
*Project Phase:* Construction  
*Curb ramps:* 113

**Region North Summary:**

There are 2 individual projects along with 4 ADA contracts with various numbers of projects totaling 409 curb ramps identified for construction. The current phase of each project is as follows:

***Construction: 10 projects, including 4 ADA contracts***

Taft Ave. Pedestrian Bridge over Rt. 80  
ADA North, Contract 1 (2 projects)  
ADA North, Contract 4, Rt. 10 Harrison Ave. to W. Northfield Ave. (2 projects)  
ADA North, Contract 5  
ADA North, Contract 2 (4 projects)

**REGION CENTRAL**

**Project ID: 153890**

Projected Substantial Completion Date: 6/1/2024  
Rt. 35 Osborne Ave. To Manasquan River & Old Bridge Rd. to Rt. 34 & Rt. 70  
*Construction Type:* Resurfacing  
*County:* Ocean  
*Municipality:* Point Pleasant Boro  
*Project Phase:* Final Design  
*Number of curb ramps:* 124

**Project ID: 154010**

Projected Substantial Completion Date: 9/11/2020  
Rt. 138 GSP to Rt. 35  
*Municipality:* Wall Twp  
*Construction Type:* Resurfacing  
*Project Phase:* Preliminary Engineering  
*County:* Monmouth  
*Number of curb ramps:* 41



**Project ID: 158110**

Projected Substantial Completion Date: 3/16/22  
Rt. 27 ADA Ramps- Evergreen St. to Elizabeth River  
*Construction Type:* Pedestrian  
*County:* Middlesex, Union  
*Municipality:* Edison, Woodbridge Twp., Rahway  
*Project Phase:* Construction ongoing  
*Number of curb ramps:* 286

**Project ID: 163620**

Projected Status: TBD (funding approved 2023)  
Rt. 173, CR 513 (Pittstown Rd) to Beaver Ave. (CR 626)  
*Construction Type:* Pedestrian Safety  
*County:* Hunterdon  
*Municipality:* Clinton, Franklin, Union Twp  
*Project Phase:* Preliminary Engineering  
*Number of curb ramps:* 35

**DB #15417 / Project ID: 154170 - ADA Central, Contract 1**

Projected Substantial Completion Date: 10/10/2022  
Rt 71, Sea Girt Avenue to Route 35  
Rt 9 var locations from S of Alexander Ave to S of Rt 79  
Rt 34/35 Colts Neck and Wall Twps., Resurfacing  
Rt 9 Pohatcong Lake Dam  
*Construction Type:* Pedestrian  
*Counties:* Ocean, Monmouth  
*Municipality:* Freehold, Howell  
*Project Phase:* Preliminary Engineering  
*Number of curb ramps:* 684

**DB #15418 / Project ID: 154180 - ADA Central, Contract 2**

Projected Substantial Completion Date: 7/25/2022  
Rt 36, S of Miller Av to N of Union Av (CR 39), Resurfacing  
Rt 35, Cherry Tree Lane to Rt. 9, Resurfacing Vari Locations  
Rt 27 Parillo Dr to Sandford St, Pavement  
Rt 1, NB, South of CR 514 to Rt 287, Resurfacing  
Rt 33 Bridge over Rocky Brook, Emergency Repairs  
Rt 35, Cheesequake Creek Bridge  
Groveville Road over Rt 130  
*Construction Type:* Pedestrian  
*County:* Central region  
*Municipality:* Various  
*Project Phase:* Final Design  
*Number of curb ramps:* 459

**DB #15419 / Project ID: #154190 - ADA Central Contract 3**

Projected Substantial Completion Date: 5/16/2022

Rt 28 Branch of Green Brook to Hamilton Ave

Rt 1 var locations from N of College Rd to NJ 91 Connector R

Rt 206 South of Bridge Point Road to Doctors Way

Rt 31 Bridge over Shabbecong Creek

Rt 78 Ramp "C" over Beaver Brook

*Construction Type:* Pedestrian

*County:* Central region

*Municipality:* Various

*Project Phase:* Construction

*Number of curb ramps:* 378

**Region Central Summary:**

There are 4 individual projects along with 3 ADA contracts with various numbers of projects totaling 2,007 curb ramps identified for construction. The current phase of each project is as follows:

***Preliminary Engineering: 14 projects***

Rt. 138 GSP to Rt. 35

Rt. 173, CR 513 (Pittstown Rd) to Beaver Ave. (CR 626)

ADA Central, Contact 1 (4 projects)

***Final Design: 3 projects***

Rt. 35 Osborne Ave. to Manasquan River

ADA Central, Contract 2 (7 projects)

ADA Central, Contact 3 (5 projects)

***Construction: 1 project***

Rt. 27 Bridges St. to Frederic St.

**REGION SOUTH**

**Project ID: 1168010- ADA South Contract 1 w/right of way**

Projected Substantial Completion Dates: 8/24/2022

Rt 206 Rizzotte Dr to Burlington Co Line, Resurfacing

Rt 30 and Pomona Road (CR 575)

*Construction Type:* Pedestrian

*County:* Atlantic, Burlington

*Municipality:* Galloway Twp., Hammonton Town, Shamong Twp.

*Project Phase:* Construction

*Number of curb ramps:* 190

**DB #15421 / Project ID: #154210 - ADA South Contract 2**

Projected Substantial Completion Date: Delayed

Rt 49/55 Interchange Improvements at Rt 55

Rt 40 Carneys Point and Pilesgrove Resurfacing

Rt 45 Carpenter St to Red Bank Ave

Rt 45 Reid St to Rt 130, Pavement

*Construction Type:* Pedestrian

*County:* Cumberland, Gloucester, Salem

*Municipality:* Various

*Project Phase:* Construction

*Number of curb ramps:* 190

**DB #15422 / Project ID: 154220 - ADA South Contract 3**

Projected Substantial Completion Date: 9/10/2021

Rt 168 over I-295, Bridge Deck Replacement

Rt 168 Benigno Boulevard

Collings Avenue (CR 630) over Route I-676 SB

Rt 70 WB over Rt 38

Rt 30 E of Brand Ave to E of London Ave Pavement Rehab

*Construction Type:* Pedestrian

*County:* Camden

*Municipality:* Various

*Project Phase:* Construction

*Number of curb ramps:* 166

**DB #15423 / Project ID: 154230 - ADA South Contract 4**

Projected Substantial Completion Date: 1/14/2022

Rt 30 Grove St to Brand Ave 3

*Construction Type:* Pedestrian

*County:* Camden

*Municipality:* Barrington, Somerdale, Clementon Boros

*Project Phase:* Final Design

*Number of curb ramps:* 380

**Project ID: 163220 - ADA South Contract 5, Rt. 9 & Rt. 47**

Projected Substantial Completion Date:

*Construction Type:* Pedestrian

*County:* Atlantic, Gloucester

*Municipality:* Galloway Twp., Clayton Boro

*Project Phase:* Construction

*Number of curb ramps:* 8

**Project ID: 124180 - Rt. 73 CR 721 to NJ Transit Bridge**

Project Status: Closed

Construction Type: Resurfacing

County: Camden

Municipality: Winslow

Project Phase: Construction

Number of curb ramps: 28

**Project ID: 114160 – Rt. 30 Atco Ave. to Rt. 206**

Projected Substantially Completion: 9/6/23, and Final Completion 12/7/23

Construction Type: Resurfacing

County: Atlantic, Camden

Municipality: Hammonton, Waterford, Winslow

Project Phase: Construction

Number of curb ramps: 110

**Project ID: 068095 Rt. 40/322 Median Closure, Oakcrest Ave. to Spencer Ave.**

Projected Substantial Completion Date: 6/1/2023

Construction Type: Safety

County: Atlantic

Municipality: Egg Harbor, Hamilton

Project Phase: Preliminary Engineering

Number of curb ramps: 60

**Region South**

There are 3 projects along with 5 ADA contracts with various numbers of projects totaling 1,132 curb ramps identified for construction. The current phase of each project is as follows:

***Preliminary Engineering: 1 project***

Rt. 40/322 Median Closure, Oakcrest Ave. to Spencer Ave

***Final Design: 1 project***

ADA South, Contract 4

***Construction: 5 projects***

ADA South Contract 1, w/right of way (2 projects)

ADA South, Contract 2 (4 projects)

ADA South, Contract 3 (5 projects)

ADA South Contract 5, Rt. 5, & Rt. 47

Rt. 30 Atco Ave to Rt. 206

***Closed:***

Rt. 73 CR 721 to NJ Transit Bridge

Please note that each project has a timeline or phase which includes preliminary engineering, right of way, design, final design, construction, substantially completed and completed and closed. Hence, ADA contracts and projects that include ADA improvements will continue to be displayed in our ADA Transition Plan; however, the status of the project will be updated accordingly until closed. The following charts are separated by regions and show the progress and status of the above projects in FY2023 and FY2024.

### **Projects and Regional Contracts Comparison Charts (FY2023 to FY2024)**

#### **Region North**

<b>Project ID</b>	<b>Project Name</b>	<b>County</b>	<b>Project Phase FY2024</b>	<b>Project Phase FY2023</b>	<b>Initial Projected Completion Date</b>
163080	Taft Ave. Pedestrian Bridge over Rt. 80	Passaic	Construction	N/A	4/4/2024
163180	Rt. 46 Pequannock St. to CR 513	Morris	Final Design	Final Design	6/1/2023
154110	ADA North, Contract 1	Morris, Warren	Construction	Construction	10/3/2022
154120	ADA North, Contract 2	Morris, Sussex	Construction	Construction	2/22/2023
154140	ADA North, Contract 4	Essex, Morris	Construction	Construction	5/27/2022
154150	ADA North, Contract 5	Bergen	Construction	Construction	9/30/2020

#### **Region Central**

<b>Project ID</b>	<b>Project Name</b>	<b>County</b>	<b>Project Phase FY2024</b>	<b>Project Phase FY2023</b>	<b>Initial Projected Completion Date</b>
153890	Rt. 35 Osborne Ave to Manasquan River & Old Bridge Rd. to Rt. 34 & Rt. 70	Ocean	Final Design	Preliminary Engineering	6/1/2024
154010	Rt. 138 GSP to Rt. 35	Monmouth	Preliminary Engineering	Preliminary Engineering	9/11/2020
158110	Rt. 27 ADA Ramps – Evergreen St. to Elizabeth River	Middlesex, Union	Construction	Construction	3/16/2022
163620	Rt. 173, CR 513 to Beaver Ave.	Hunterdon	Preliminary Engineering	Preliminary Engineering	TBD
154170	ADA Central, Contract 1	Ocean, Monmouth	Preliminary Engineering	Preliminary Engineering	10/10/2022
154180	ADA Central, Contract 2	Central Region	Final Design	Final Design	7/25/2022
154190	ADA Central, Contract 3	Central Region	Construction	Final Design	5/16/2022

**Region South**

<b>Project ID</b>	<b>Project Name</b>	<b>County</b>	<b>Project Phase FY2024</b>	<b>Project Phase FY2023</b>	<b>Initial Projected Completion Date</b>
1168010	ADA South Contract 1, w/ Right of Way	Atlantic, Burlington	Construction	Preliminary Engineering	8/24/2022
154210	ADA South Contract 2	Cumberland, Gloucester, Salem	Construction	Construction	Delayed
154220	ADA South Contract 3	Camden	Construction	Construction	9/10/2021
154230	ADA South Contract 4	Camden	Final Design	Final Design	1/14/2022
163220	ADA South Contract 5, Rt. 9 & Rt. 47	Atlantic, Gloucester	Construction	Final Design	N/A
124180	Rt. 73 CR 721 to NJ Transit Bridge	Camden	Construction	Construction	Status: Closed
114160	Rt. 30 Atco Ave. to Rt. 206	Atlantic, Camden	Construction	Construction	12/7/2023
068095	Rt. 40/322 Median Closure, Oakcrest Ave. to Spencer Ave.	Atlantic	Preliminary Engineering	Preliminary Engineering	6/1/2023

The following page includes additional statewide projects and/or programs which address ADA improvements, (e.g., curb ramps, accessibility, safety, etc.). These projects/programs are included in the department's capital and statewide transportation improvement program but were not included in the above ADA contract information. They will be addressed in detail in the upcoming ADA Transition Plans.

### Other Statewide ADA Contracts, Projects, and Programs

Project ID	Project Name	County	Project Phase FY24	Project Phase FY23
S1702 / 173620	Baltic Avenue, Maine Avenue to Missouri Avenue	Atlantic	Construction	N/A
X185	Bicycle & Pedestrian Facilities/Accommodations	Various	ERC	ERC
N2308 / 233420	Boylan Terrace Neighborhood Pedestrian Connection	Somerset	Construction	N/A
S2102 / 213130	California Avenue (CR 663)	Atlantic	Construction	N/A
D1710 / 173920	Lincoln Ave/Chambers Street (CR 626), Bridge over Amtrak & Assunpink Creek	Mercer	Construction	N/A
D1914 / 193770	Mount. Ephraim Avenue Safety Improvements, Ferry Avenue (CR 603) to Haddon Avenue (CR 561)	Camden	Design	Design
S2105 / 213160	Ohio Avenue (CR 630)	Atlantic	Construction	N/A
D2207 / 223080	Rancocas Creek Greenway, Laurel Run Park (Circuit)	Burlington	Construction	N/A
98540 / 985400	Route 21, Newark Riverfront Pedestrian and Bicycle Access	Essex	Construction	N/A
09325 / 093250	Route 31, Bridge over Furnace Brook	Warren	Construction	ROW
12307 / 123070	Route 38, South Church Street (CR 607) to Fellowship Road (CR 673), Operational and Safety Improvements	Burlington	ROW	N/A
12305 / 123050	Route 47, Grove St. to Route 130, Pavement	Gloucester	Construction	N/A
11326C / 208050	Route 76/676 Bridges and Pavement, Contract 3	Camden	Construction	Construction
14324 / 143240	Route 166, Bridges over Branch of Toms River	Ocean	Construction	N/A

#### **LEGEND:**

**ERC** = Design, Right of Way, and Construction  
**ROW** = Right of Way

### **6.3 ACCELERATED RIGHT OF WAY PROCESS FOR SIDEWALKS**

A principal purpose of the ADA is to ensure that pedestrians with disabilities have equal opportunity and access to the public rights-of-way. A critical piece in this requirement is to ensure that curb ramps are installed for pedestrians, where applicable when alterations occur to streets, roadways or highways.

In 2017, the Department, in collaboration with the FHWA established the Accelerated ROW Process for Sidewalks that utilize accelerated tools (i.e., sidewalk right-of-way agreements, temporary and permanent sidewalk easement descriptions, Administrative Determinations of Values (ADVs), and simplified title research). A Process Improvement Working Group was established for this effort and included representatives from FHWA, and NJDOT Divisions of Project Management, Capital Program Support, Right-of Way & Access Management, and Civil Rights and Affirmative Action.

On Limited Scope Resurfacing Projects, this process will shorten the timeframe needed to acquire ROW associated with ADA sidewalk work, to restore pavement condition within acceptable periods. For ADA contracts and Full-Scope Projects, it will improve the efficiency of acquiring parcels needed to accommodate ADA sidewalk work.

To further address the ADA, the Department has expanded its typical road resurfacing projects to include ADA required updates for adjoining sidewalks and/or curb ramps.

The Division of Right of Way & Access Management implemented the accelerated right of way process to help make the additional sidewalk right of way work more manageable. This process is limited to sidewalk work parcels. Projects with other types of right of way acquisitions will use the standard right of way process on any parcel where non-sidewalk right of way is required.

At the conclusion of any work, the maintenance responsibility for sidewalks on private property returns to the adjoining owner.

This accelerated process does not provide for new utility rights or allow any traffic cabinets and wiring in private property. If utility rights or NJDOT occupation of the property for traffic control devices is required, the standard acquisition process will be used, with a sidewalk easement and a utility or other easement as needed.

Finally, it is noteworthy to mention that the accelerated process uses the Department's existing authority to acquire property and is intended to conform to FHWA requirements as to the use of ADA offers.

## **7.0 ACTIVITIES**

This Section includes a series of concrete steps that NJDOT can undertake to support the phased-in approach to compliance discussed at the outset of this Plan. These activities will be adjusted or revised as necessary in accordance with known and available resources, which have not been determined as of the writing of this Transition Plan.



## **7.1 ADA ACTIVITIES COMPLETED IN FY 2024**

- Updated our website to include specific instructions on how the public can submit comments on our ADA efforts and self-evaluation, either directly or through a designated ADA email address.
- Engaged NJDOT IT/GIS who have agreed to support our efforts to map the ADA data (i.e., curb ramps and other barriers).
- Drafted a business plan/request for proposal (RFP) document which will be used to solicit firms who have the capability to collect the statewide ADA curb ramp data.
- Improved engagement and communications with NJDOT's Capital Program Support's Design Standards as it relates to coordination of activities connected with the NJDOT ADA Transition Plan's self-evaluation and effective management of ADA curb ramps and barriers.
- Met with other DOTs to discuss best practices and software used to collect and maintain curb ramp inventory and other related data to update physical barriers to accessibility in facilities and state transportation systems.
- NJDOT and Subrecipients participated in FHWA's two-hour, basic ADA Training in August 2024, which included state and local government responsibilities and answers to many ADA/504 questions.
- Developed an Excel document to include all ADA related contracts funded and planned for the past five years including a status update.

## **7.2 IMMEDIATE ACTIVITIES TO UNDERTAKE**

Undoubtedly, NJDOT has experienced challenges in its transition to comply with the ADA. As mentioned, most of the difficulties are due, in part to the time, budgetary demands and dedicated staffing necessary to fully undertake and complete these ADA required tasks. Further, better department-wide coordination of ADA activities is also necessary to ensure and effect compliance. We are also seeking to establish better methods to track ADA compliance on projects to include the design and maintenance of an installation schedule. Consequently, we have been exploring the potential to hire a consultant who will be engaged to develop an infrastructure inventory and curb ramp installation schedule specific to the NJDOT Transition Plan. Areas we have identified to address include:

- State Roadways
- Buildings with public access
- Parks

- Parking lots
- Recreational trails
- Pedestrian trails
- Pedestrian right-of-way facilities
  - Pedestrian signals
  - Curb ramps
  - Sidewalks
  - Pedestrian street crossings
  - Transit stops (physical and programmatic)
  - Shared use trails

The utilization of a GIS System is also recommended for data collection and management. The following are immediate steps that NJDOT is undertaking to ensure ADA compliance in the current year:

- Update self-evaluation and solicit feedback and comments from the public using a variety of methods such as virtual meetings/presentations, engagements with advocacy groups and other electronic tools (e.g., NJDOT social media sites), taking into consideration the needs of people with disabilities and limited English proficiency.
- Update ADA Transition Plan and submit by November 1, 2024.
- Provide an addendum to the ADA Transition Plan including all comments received from the public by December 15, 2024.
- Procure the services of a consultant to collect the ADA curb ramp data and other related barriers that GIS will use to develop interactive map of ADA data statewide.
- Secure dedicated State and Federal funding to incorporate ADA upgrades into projects in the STIP and Long-Range Transportation Plans.
- Ensure ADA is applied on programmed projects.
- Continue training activities on ADA compliance.
- Continue conducting site inspections of facilities.
- Engage those in the disabled community in the ADA planning process.
- Continue meeting with and assembling an external advisory group/stakeholder group for involvement in future Self-Evaluation and Transition Plan efforts, as a requirement of the Transition Plan.
- Continue working with the ADA Working Group on evolving ADA issues.
- Continue meeting with MPOs and various sub-recipients in local counties and municipalities.

### **7.3 SHORT-TERM ACTIVITIES (2 TO 3 YEARS)**

The following initiatives could potentially be started in the short-term:

- Continue securing dedicated State and Federal funding for incorporating ADA upgrades into programmed projects in the STIP and Long-Range Transportation Plans.
- Continue public outreach efforts with respect to the Self-Evaluation and Transition Plan processes.
- Ensure ADA upgrades on programmed project
- Update Curb Ramp Database to include projects that are ADA compliant.
- Amend the ADA 504/Transition Plan based on existing inventory efforts.
- As requested, prepare vital documents in Braille, large print and on cassette tapes if they are not currently available in alternative formats.

### **7.4 INTERMEDIATE-TERM ACTIVITIES (4 TO 6 YEARS)**

To effectively evaluate ADA performance and compliance, the Transition Plan should be updated periodically as the short-term goals are met and facilities are inventoried. Intermediate goals include the following tasks:

- Update ADA 504/Transition Plan (As necessary).
- Complete inventory of NJDOT pedestrian facilities.
- Continue training activities on ADA compliance.
- Continue public outreach efforts with respect to the Self-Evaluation and Transition Plan processes.
- Ensure ADA upgrades on programmed projects.

### **7.5 LONG-TERM ACTIVITIES (7 TO 10 YEARS)**

Long-term goals aim to achieve the highest level of compliance with ADA regulations and incorporate ADA-related activities into the day-to-day activities of NJDOT. These goals are targeted for accomplishment within a 10-year timeframe, as mentioned in the Self-Evaluation report.

- Ensure that all NJDOT buildings and facilities built after 1992 comply with ADA standards.
- Continue public outreach efforts with respect to the Self-Evaluation and Transition Plan processes.
- Use the ADA inventory database to improve compliance efforts.
- Incorporate ADA compliance into the day-to-day work of NJDOT.
- Complete and monitor annual progress of the curb ramp installation schedule.
- Satisfy all the required elements of the Transition Plan.

## **7.6 FUNDING OPPORTUNITIES**

### **Pedestrian and Bicycle Funding Opportunities: U.S. Department of Transportation Transit, Safety, and Highway Funds, September 9, 2022**

The Federal Highway Administration (FHWA) has compiled a table of funding sources that may assist in the implementation of ADA Transition Plans and related data (**Appendix J**). The table indicates potential eligibility for pedestrian and bicycle activities and projects under U.S. Department of Transportation surface transportation funding programs. Activities and projects need to meet program eligibility requirements. Safety, accessibility, equity, and convenience of walking and bicycling should be integrated into surface transportation projects.

## **8.0 CONCLUSION**

NJDOT's goal is to provide a transportation program and system that fully complies with Title II of the Americans with Disabilities Act. Accordingly, NJDOT will continue to ensure ADA is advanced to achieve compliance throughout the State's transportation program. The ADA Coordinator will also continue to work with appropriate program areas to help develop, maintain, and coordinate the Department's ADA requirements. As previously mentioned, the coordinator's activities include monitoring the curb ramp installation schedule and developing activities and formal processes to identify and address future installations of accessible features for all users. The coordinator, along with all applicable areas will work together to ensure NJDOT fully considers its ADA obligations at early stages within the pipeline process. The coordinator will keep ADA in the forefront of the Department's activities by attending Capital Program Screening Committee meetings, Concept Development Core Group meetings, and project field trips. To track improvements, quarterly progress updates will also continue to be completed, publicized, and included in future Transition Plans.

## **APPENDICES**

## **APPENDIX A – NOTICE UNDER THE ADA**



NEW JERSEY DEPARTMENT OF TRANSPORTATION

NOTICE UNDER THE AMERICANS  
WITH DISABILITIES ACT

In accordance with the requirements of Title II of the Americans with Disabilities Act of 1990 ("ADA"), the New Jersey Department of Transportation "NJDOT" will not discriminate against qualified individuals with disabilities on the basis of disability in its services, programs, or activities.

*Employment:* NJDOT does not discriminate on the basis of disability in its hiring or employment practices and complies with all regulations promulgated by the U.S. Equal Employment Opportunity Commission under title I of the ADA.

*Effective Communication:* NJDOT will generally, upon request, provide appropriate aids and services leading to effective communication for qualified persons with disabilities so they can participate equally in NJDOT programs, services, and activities, including qualified sign language interpreters, documents in Braille, and other ways of making information and communications accessible to people who have speech, hearing, or vision impairments.

*Modifications to Policies and Procedures:* NJDOT will make all reasonable modifications to policies and programs to ensure that people with disabilities have an equal opportunity to enjoy all of its programs, services, and activities. For example, individuals with service animals are welcomed in NJDOT offices, even where pets are generally prohibited.

Anyone who requires an auxiliary aid or service for effective communication, or a modification of policies or procedures to participate in a program, service, or activity of NJDOT should contact the office of Chrystal Section ADA/504 Coordinator, 1035 Parkway Avenue, Trenton, New Jersey, 08625, Main Office Building, 2<sup>nd</sup> Fl, phone (609) 963-2046, fax (609) 530-4030, Email: [Chrystal.Section@dot.nj.gov](mailto:Chrystal.Section@dot.nj.gov), Monday-Friday, 9:00 AM-5:00 PM as soon as possible but no later than 48 hours before the scheduled event.

The ADA does not require the NJDOT to take any action that would fundamentally alter the nature of its programs or services, or impose an undue financial or administrative burden.

Complaints that a program, service, or activity of NJDOT is not accessible to persons with disabilities should be directed to Chrystal Section, ADA/504 Coordinator, 1035 Parkway Avenue, Trenton, New Jersey, 08625, Main Office Building, 2<sup>nd</sup> Fl, phone (609) 963-2046, fax (609) 530-4030, Email: [Chrystal.Section@dot.nj.gov](mailto:Chrystal.Section@dot.nj.gov), Monday-Friday, 9:00 AM-5:00 PM. NJDOT. Recipients shall keep on file for one year all complaints of noncompliance received. A record of all such complaints, which may be in summary form, shall be kept for five years. (49 CFR 27.121(b)). The coordinator is responsible for complaint maintenance.

NJDOT will not place a surcharge on a particular individual with a disability or any group of individuals with disabilities to cover the cost of providing auxiliary aids/services or reasonable modifications of policy, such as retrieving items from locations that are open to the public but are not accessible to persons who use wheelchairs.

## **APPENDIX B – ADA NOTICE OF NONDISCRIMINATION**





# State of New Jersey

DEPARTMENT OF TRANSPORTATION

P.O. Box 600

Trenton, New Jersey 08625-0600

PHILIP D. MURPHY  
*Governor*

FRANCIS K. O'CONNOR  
*Commissioner*

TAHESHA L. WAY  
*Lt. Governor*

## **AMERICANS WITH DISABILITIES ACT NOTICE OF NONDISCRIMINATION**

*The New Jersey Department of Transportation (NJDOT) does not discriminate on the basis of disability with respect to all terms and conditions of its employment practices, access to its programs, services, activities or in any aspect of its operations.*

This notice is provided as required by Title II of the Americans with Disabilities Act (ADA) of 1990 and Section 504 of the Rehabilitation Act of 1973. Questions, complaints, or requests for additional information regarding the ADA and Section 504 may be directed to the NJDOT Division of Civil Rights/Affirmative Action, ADA Compliance Coordinator identified below. You may also request this information be provided to you in an alternate size or format.

Chrystal Section, ADA Coordinator  
New Jersey Department of Transportation  
Division of Civil Rights  
1035 Parkway Avenue, Trenton, New Jersey, 08625  
Main Office Building, 2<sup>nd</sup> Fl.  
Phone: (609) 963-2046, Fax: (609) 530-4030  
Email: [Chrystal.Section@dot.nj.gov](mailto:Chrystal.Section@dot.nj.gov)

Francis K. O'Connor  
Francis K. O'Connor  
Commissioner

11/1/2024  
Date

## **APPENDIX C – ADA GRIEVANCE PROCEDURE**



**New Jersey Department of Transportation  
Grievance Procedure under  
the Americans with Disabilities Act**

This Grievance Procedure is established to meet the requirements of the Americans with Disabilities Act of 1990 ("ADA"). It may be used by anyone who wishes to file a complaint alleging discrimination on the basis of disability in the provision of services, activities, programs, or benefits by the New Jersey Department of Transportation "NJDOT". The NJDOT's Personnel Policy governs employment-related complaints of disability discrimination.

The complaint should be in writing and contain information about the alleged discrimination such as name, address, phone number of complainant and location, date, and description of the problem. Alternative means of filing complaints, such as personal interviews or a tape recording of the complaint will be made available for persons with disabilities upon request. The complaint should be submitted by the grievant and/or his/her designee as soon as possible but no later than 180 days after the alleged violation.

To file a complaint with NJDOT Division of Civil Rights and Affirmative Action, you may contact the ADA/504 Coordinator at the following address, number or email:

**Chrystal Section, ADA/504 Coordinator  
New Jersey Department of Transportation, Division of Civil Rights  
1035 Parkway Avenue, Trenton, New Jersey, 08625  
Main Office Building, 2<sup>nd</sup> Fl.  
Phone: (609) 963-2046, Fax: (609) 530-4030  
Chrystal.Section@dot.nj.gov  
Monday-Friday, 9:00 AM-5:00 PM**

To file a complaint with the United States Department of Transportation, please contact them at the following address, number and email:

**Federal Highway Administration  
U.S. Department of Transportation  
Office of Civil Rights  
1200 New Jersey Avenue, SE  
8<sup>th</sup> Floor E81-105  
Washington, DC 20590  
Phone: 202-366-0693  
Fax: 202-366-1599  
TTY: 202-366-5132  
Email: [CivilRights.FHWA@dot.gov](mailto:CivilRights.FHWA@dot.gov)**

1. A grievance may be filed in writing or orally, but should contain the name and address of the person filing it, and briefly describe the alleged violation. A form for this purpose is available from the designated ADA coordinator. In cases of employment related grievances, the procedures established by the Department of Personnel, N.J.A.C. 4A:7-1.1 et seq. will be followed where applicable.

2. A grievance should be filed promptly within 180 days after the grievant becomes aware of the alleged violation. (Processing of allegations of discrimination which occurred before this grievance procedure was in place will be considered on a case-by-case basis.)

3. An investigation, as may be appropriate, will follow the filing of a grievance. The investigation will be conducted by the agency's designated ADA Coordinator. The rules contemplate informal but thorough investigations, affording all interested persons and their representatives, if any, an opportunity to submit evidence relevant to a grievance.

4. In most cases a written determination as to the validity of the grievance and a description of the resolution, if any, will be issued by the designated decision maker and a copy forwarded to the grievant no later than 120 days after its filing.

5. The ADA coordinator will maintain the files and records of the agency relating to the grievances filed.

6. The right of a person to a prompt and equitable resolution of the grievance filed hereunder will not be impaired by the person's pursuit of other remedies such as the filing of an ADA grievance with the responsible Federal department or agency or the New Jersey Division on Civil Rights. Use of this grievance procedure is not a prerequisite to the pursuit of other remedies.

7. The rules will be construed to protect the substantive rights of interested persons, to meet appropriate due process standards and to assure that the agency complies with the ADA and implementing Federal rules.

All inquiries regarding the agency's compliance with the ADA and the availability of accommodation which would allow a qualified individual with a disability to receive services or participate in a program or activity provided by the agency should be directed to the designated coordinator identified in (a) above.

All grievances alleging that the agency has failed to comply with or has acted in a way that is prohibited by the ADA should be directed to the designated ADA coordinator identified in this section, in accordance with the procedures set forth in N.J.A.C. 16:1B-4.

A grievance alleging that the agency has failed to comply with the ADA or has acted in a way that is prohibited by the ADA shall be submitted either in writing or orally to the designated ADA coordinator within 180 days of the grievant becoming aware of the alleged violation.

Upon receipt of a grievance, the designated ADA coordinator will notify the grievant of the receipt of the grievance and the initiation of an investigation into the matter. The designated

ADA coordinator will also indicate a date by which it is expected that the investigation will be completed, which date shall not be later than 120 days from the date of receipt of the grievance unless a later date is agreed to by the grievant.

Upon completion of the investigation, the designated ADA coordinator shall prepare a report for review by the designated decision maker for the agency. The designated decision maker shall render a written decision within 120 days of receipt of the grievance, if practicable or unless a later date is agreed to by the grievant, which decision shall be transmitted to the grievant and/or the alternate contact person if so designated by the grievant.

You have the right to appeal this decision. If you wish to appeal this decision, however you must submit a written appeal to:

**Federal Highway Administration  
U.S. Department of Transportation  
Office of Civil Rights  
1200 New Jersey Avenue, SE  
8<sup>th</sup> Floor E81-105  
Washington, DC 20590  
Phone: 202-366-0693  
Fax: 202-366-1599  
TTY: 202-366-5132  
Email: [CivilRights.FHWA@dot.gov](mailto:CivilRights.FHWA@dot.gov)**

Your appeal must be postmarked or delivered within 20 days of your receipt of this determination. It must include a copy of this determination, the reason for the appeal and the specific relief requested.

Recipients shall keep on file for one year all complaints of noncompliance received. A record of all such complaints, which may be in summary form, shall be kept for five years. (49 CFR 27.121(b)). The NJDOT ADA/504 coordinator is responsible for complaint maintenance.

NJDOT prohibits retaliation for filing a grievance, complaint or participation in the process and any allegations will be promptly and fully investigated.

All complaints received are logged onto the "ADA Complaints Record Check Sheet", which is maintained by the ADA/504 coordinator. The check sheet is an ongoing document used to track the complaint process. When the coordinator receives a call or complaint from an individual or FHWA the information is logged onto the sheet under these fields: **Case No., Complainant, Respondent, Agency Filed With; Date Filed, Bases, Date of Report, and Decision.**

The coordinator investigates the complaint as per FHWA instruction and ADA Guidelines. Once the complaint is resolved a date is entered. A hard copy of the check sheet is stored in the coordinator's ADA file cabinet.

**New Jersey Department of Transportation  
ADA/504 Complaint/Grievance Form**

Name of Grievant: \_\_\_\_\_

Person Preparing Complaint (if different from Grievant): \_\_\_\_\_

Relationship of Preparer to Grievant (if applicable): \_\_\_\_\_

Address of Grievant: \_\_\_\_\_

Telephone Number of Grievant: \_\_\_\_\_ E-mail: \_\_\_\_\_

**Nature of grievance:**

Please describe the nature of the specific complaint or grievance, including any incident, barrier, or perceived denial of benefit of any service, program or activity.

Please include the date and as much detail as possible on the location of the alleged violation. Use additional pages or attachments to substantiate your description.

\_\_\_\_\_  
\_\_\_\_\_  
\_\_\_\_\_  
\_\_\_\_\_

**Proposed resolution or accommodation:**

Please describe what you believe should be done to resolve the grievance.

\_\_\_\_\_  
\_\_\_\_\_  
\_\_\_\_\_  
\_\_\_\_\_

\_\_\_\_\_  
Signature of Grievant/Preparer

\_\_\_\_\_  
Date

**Please return this form in hard copy or e-mail it to:**

**Chrystal Section, ADA/504 Coordinator  
New Jersey Department of Transportation, Division of Civil Rights  
1035 Parkway Avenue, Trenton, New Jersey, 08625  
Main Office Building, 2<sup>nd</sup> Fl.  
Phone: (609) 963-2046, Fax: (609) 530-4030  
Chrystal.Section@dot.nj.gov**

Upon request, copies of this form will be provided in alternative formats. Please contact the ADA/504 Coordinator listed above.

## **APPENDIX D – ADA COMPLAINT FORM**

**New Jersey Department of Transportation  
ADA/504 Complaint/Grievance Form**

Name of Grievant: \_\_\_\_\_

Person Preparing Complaint (if different from Grievant): \_\_\_\_\_

Relationship of Preparer to Grievant (if applicable): \_\_\_\_\_

Address of Grievant: \_\_\_\_\_

Telephone Number of Grievant: \_\_\_\_\_ E-mail: \_\_\_\_\_

**Nature of grievance:**

Please describe the nature of the specific complaint or grievance, including any incident, barrier, or perceived denial of benefit of any service, program or activity.

Please include the date and as much detail as possible on the location of the alleged violation. Use additional pages or attachments to substantiate your description.

\_\_\_\_\_  
\_\_\_\_\_  
\_\_\_\_\_  
\_\_\_\_\_

**Proposed resolution or accommodation:**

Please describe what you believe should be done to resolve the grievance.

\_\_\_\_\_  
\_\_\_\_\_  
\_\_\_\_\_

\_\_\_\_\_  
Signature of Grievant/Preparer

\_\_\_\_\_  
Date

**Please return this form in hard copy or e-mail it to:**

**Chrystal Section, ADA/504 Coordinator  
New Jersey Department of Transportation, Division of Civil Rights  
1035 Parkway Avenue, Trenton, New Jersey, 08625  
Main Office Building, 2<sup>nd</sup> Fl.  
Phone: (609) 963-2046, Fax: (609) 530-4030  
Chrystal.Section@dot.nj.gov**

Upon request, copies of this form will be provided in alternative formats. Please contact the ADA/504 Coordinator listed above.



## **APPENDIX E - ADA ASSURANCE TO FHWA**



# State of New Jersey

DEPARTMENT OF TRANSPORTATION

P.O. Box 600

Trenton, New Jersey 08625-0600

PHILIP D. MURPHY  
*Governor*

FRANCIS K. O'CONNOR  
*Commissioner*

TAHESHA L. WAY  
*Lt. Governor*

## **AMERICANS WITH DISABILITIES ACT and SECTION 504 OF THE REHABILITATION ACT OF 1973 ASSURANCE**

Pursuant to the requirements of Section 504 of the Rehabilitation Act of 1973 (29 USC 794), the New Jersey Department of Transportation, desiring to avail itself of federal financial assistance from the US Department of Transportation, hereby gives assurance that no qualified disabled person shall, solely by reason of his disability, be excluded from participation in, be denied the benefits of, or otherwise be subjected to discrimination, including discrimination in employment, under any program or activity that receives or benefits from this federal financial assistance.

The New Jersey Department of Transportation further assures that its programs will be conducted, and its facilities operated, in compliance with all the requirements imposed by or pursuant to 49 CFR Part 27, 28 CFR § 35 and 42 USC § 12101-12213.

*Francis K. O'Connor*

Francis K. O'Connor  
Commissioner

*11/1/2024*

Date

**APPENDIX F – ADA TRANSITION PLAN PUBLIC  
INVOLVEMENT AND COMMUNITY ENGAGEMENT  
PROCESS**



## **NEW JERSEY DEPARTMENT OF TRANSPORTATION**

### **Americans with Disabilities Act (ADA) Transition Plan**

### **Public Involvement and Community Engagement Process**

#### **Background**

The Americans with Disabilities Act (ADA) of 1990 is a federal law which prohibits discrimination in access to employment, government services, public accommodations, telecommunications, and other miscellaneous provisions. Title II of the ADA requires public agencies to ensure that their programs, services and activities are accessible to individuals with disabilities.

Title II of the ADA requires public entities with 50 or more employees who receive federal funding and are covered by Section 504 of the Rehabilitation Act of 1973 to develop and maintain an ADA Transition Plan and designate at least one employee to coordinate its efforts to comply with and carry out ongoing internal and external responsibilities under ADA. Designation of a formal ADA/504 Coordinator is an important part of the ADA Transition Plan and generally the first step in the ADA planning process. NJDOT's ADA/504 Coordinator is noted below along with contact information.

Chrystal Section  
ADA Coordinator  
New Jersey Department of Transportation  
Division of Civil Rights/Affirmative Action  
1035 Parkway Avenue  
Trenton, NJ 08625  
Main Office Building, second Floor  
(609) 963-2046 - Work  
(609) 530-4030 - Fax  
[chrystal.section@dot.nj.gov](mailto:chrystal.section@dot.nj.gov)

ADA Transition Plan  
Outline for Public Involvement and  
Community Engagement

The New Jersey Department of Transportation (NJDOT) is committed to ensure that individuals with disabilities have access to the NJDOT's programs, services and activities and has undertaken a comprehensive approach to planning and implementing necessary actions through the development and update of its ADA Transition Plan. The ADA Transition Plan guides the department's internal and external actions and modifications necessary to attain full compliance with the ADA. The transition plan's self-evaluation process establishes the department's on-going commitment to ADA accessibility that engages all New Jersey's communities in the development, maintenance and update of our policies, programs and facilities.

**Objectives**

The NJDOT values public input and recognizes that communities should be engaged in our decisions that affect them early in the process. The purpose of the Public Involvement and Community Engagement Process (PI&CEP) is to create an open and transparent process to help guide our ADA Transition Plan. The PI&CEP will ensure the creation and implementation of a transparent, proactive, and inclusive public engagement and public participation approach where the public and communities will be encouraged to share their vision, concerns and to comment on the department's ADA transition and self-evaluation efforts.

Recognizing the importance of the contribution and feedback of all communities, NJDOT seeks the input of individuals with disabilities, concerned persons, advocacy groups and organizations representing those with disabilities to participate in the NJDOT's ADA Transition Plan/Self-Evaluation processes. This participation is anticipated to gauge constituent input on accessibility issues on state roadways and public rights-of-way. These individuals, groups and organizations will also be engaged to assist in disseminating meeting information to agency staff, constituents, and other member networks they are involved with that may be interested in the information and topics covered by NJDOT's ADA public outreach activities.

**Identification of Stakeholders**

An important step in the PI&CEP is the identification of internal and external stakeholders that have an interest in our ADA plan and process. The department's ADA Coordinator will engage internal and external stakeholders on ADA related issues and concerns. The below stakeholders list collectively represents diverse external entities and various internal areas in the department with direct and indirect involvement in the ADA transition planning process. The purpose of collaboration with these groups is to leverage knowledge of the internal staff's skills, experience, and expertise to ensure ADA compliance and accessibility on NJDOT programs, projects services and activities.

**Internal  
(NJDOT)**

- Civil Rights and Affirmative Action
- Design Standards
- Program Management
- Office of Community and Constituent Relations
- Project Management Office
- Right of Way
- Traffic Engineering
- Transportation Data & Support

**External  
(Public)**

- ADA Network
- Disability Rights New Jersey
- The New Jersey Council on Developmental Disabilities,
- Progressive Center for Independent Living List
- Community Leaders
- Community and Faith Based Organizations
- Senior Centers
- NJ State Residents, Businesses and Property Owners

**Outreach, Communications and Community Engagement**

PI&CEP vary depending on the phase and planning efforts. To ensure the public and community issues and concerns are heard, understood and considered, NJDOT's approach will include working directly with the public and communities throughout its processes. Activities involving community engagement require meaningful and inclusive outreach to the public and disability communities. These activities will include one on one meetings with property owners, public information centers, open houses, workshops, focus groups and other types of public forums.

Care will be taken to ensure that communication of complex information is provided in a clear and simple manner to members of the public who have a diverse backgrounds and varied education levels.

All public meetings and formal presentations will begin with a general statement regarding nondiscrimination, and the services available to assist with preparing written comments and/or for completing forms such as demographic surveys.

## **APPENDIX G – FACILITIES ADA SITE INSPECTIONS**



# **New Jersey Department of Transportation**

## **FACILITIES ADA SITE INSPECTIONS**

### **2023**

#### **(Updates and Recommendations as of 10/1/24))**

As a follow-up to the ADA audit/site inspections of NJDOT regional facilities in 2018, during July, August and September of Calendar Year 2023, the ADA Coordinator and staff accompanied by the Division of Support Services' director, staff and state ADA Coordinator David Millstein conducted an updated ADA site inspection of five NJDOT facilities: Trenton headquarters, Mount Arlington (north), Cherry Hill (south) regional facilities, and the two tourist welcome centers/rest areas, Knowlton and Carney's Point. This report highlights noncompliant ADA features that were examined and discussed along with recommendations to bring these features into ADA compliance. The Division of Support Services will develop a prioritization schedule by January 2024 for the implementation of accessible features, including curb ramps, as appropriate.

NJDOT takes a strategic approach in assuring state-owned highways and transportation facilities comply with the ADA. To ensure ADA compliance, NJDOT uses the U.S Department of Justice's 2010 Standards for Accessible Design and ADA Accessibility Guidelines for Buildings and Facilities (ADAAG). NJDOT's goal is to provide accessible state-owned transportation facilities for all persons living, working, or traveling in New Jersey.

A public entity may not deny the benefits of its programs, activities, and services to individuals with disabilities because its facilities are inaccessible. A public entity's services, programs, or activities, when viewed in their entirety, must be readily accessible to and usable by individuals with disabilities. This standard, known as "program accessibility," applies to all existing facilities of a public entity. "The Americans with Disabilities Act Checklist for Readily Achievable Barrier Removal" (ADA Checklist) details requirements found in the ADA Standards for Accessible Design (Standards).



The ADA Checklist was used as a tool during the ADA Regional Facilities Site Inspections to assist in determining methods for providing program accessibility.



### **Trenton Headquarters**

**August 24, 2023**

Headquarters is composed of the Main Office Building (MOB), Finance & Administration (F&A) Building and the Engineering & Operations (E&O) Building.

#### **MOB:**

##### **Exterior:**

##### **Building Entrance (ADAAG 4.1, 4.2, 4.3)**

- 1) At the time of the site inspection, the entrance was under construction. After construction, there will be two *gray illuminated* bollards placed on each side of the entrance, totaling four for ADA accessibility identification.

*Completed*



### **Parking and Passenger Loading Zones (ADAAG 4.6)**

- 2) Recommended restriping accessible parking space in front of MOB. *Schedule for Spring 2024*

This work is not scheduled yet due to the current construction taking place around the complex. I need for my contractor to have full access to our complex to do any concrete/striping related repairs. This is due to contractual language and mobilization costs.

**This work will be scheduled for Spring 2025.**



### **Accessible Sites and Exterior Facilities (ADAAG 4.1.2)**

- 3) Recommended installing a Detectable Warning Surface (DWS) on the sidewalk from Lot B toward MOB. *Not warranted; no ADA spots in this area.*

When we get our contractor here, we will add a DWS.

**Scheduled for Spring 2025**



- 4) Deteriorated concrete sidewalk poses a tripping hazard and will be repaired. *Specific location needed?*

*This is added to our complex work. Located between MOB and F&A. Area is currently not accessible due to other contractual work.*

Scheduled for Spring 2025

**Interior:****Space Allowance and Reach Ranges (ADAAG 4.2)**

- 5) Security sign-in station: It is recommended that a table be permanently provided for ADA accessibility between 27in. - 34in. in height. *This has DCA code approval for ADA accessibility. If anything warrants signature or sign in procedures, security guard or escort can assist.*



### **F&A Building:**

#### **Exterior:**

- 1) The new F&A entrance will be complete by *Spring/Summer 2024*.

Construction is active. Approximately 3 months for completion. Anticipated August 2024 completion

Construction is active, revised anticipated completion is slated for December 2024



### Interior:

#### Accessible Buildings: New Construction and Ramps (ADAAG 4.1.3, 4.8)

- 2) It is recommended that a handrail be installed along ADA ramp at entrance/exit near security station. *Under review and discussions.*

(See picture on the left) ↓

We have the material. Still would like to discuss.

Awaiting discussion with Dave Millstein to confirm this is an ADA requirement and not an ask.



- 3) The door from the F&A building to MOB will need to be replaced and/or calibrated to comply with opening and closing forces for ADA compliance. (Recommended 7-10lbs. pressure for door closure) *In process*

**Completed. Please verify with your pressure tool**

- 4) It is recommended that an additional handrail be installed along ADA ramp between MOB and F&A. (Handrail should be on both sides) (See picture on the right) ↑  
*Under review and discussion*

We have the material. Still would like to discuss.

Awaiting discussion with Dave Millstein to confirm this is an ADA requirement and not an ask.

### **E&O Building:**

#### **Cafeteria:**

#### **Automatic Doors and Power-Assisted Doors (ADAAG 4.13.12) *Completed***

- 1) One automatic ADA accessible push-button door will be installed at the main entrance to the cafeteria.
- 2) The cafeteria entrance door (near Credit Union) will be replaced and calibrated to comply with opening and closing forces for ADA compliance. One automatic door ADA accessible push-button door will be installed.





### **Trenton Headquarters Overall Recommendations:**

- 1) Restripe accessible parking spaces in front of MOB. *Schedule for Spring 2025.*
- 2) Install a detectable warning surface (DWS) on the sidewalk from Lot B towards MOB. *Scheduled for Spring 2025*
- 3) Provide permanent sign-in table at MOB security station for ADA accessibility between 27in. - 34in. in height. *Current station has DCA code approval for ADA.*
- 4) Install a handrail along ADA ramp at entrance/exit near security station. *Under Review and Discussion*
- 5) Install an additional handrail along ADA ramp between MOB and F&A. *Under Review and Discussion.*
- 6) Install one automatic ADA accessible push-button door at each cafeteria entrances/exits. *Completed.*
- 7) Ensure opening and closing forces on all fire doors are ADA compliant. *Completed. Awaiting verification*

**Update: On October 30, 2023, automatic ADA accessible push-buttons were installed at cafeteria doors.**

## **MOUNT ARLINGTON SITE INSPECTION**



### **NORTH REGION HEADQUARTERS**

**July 14, 2023**

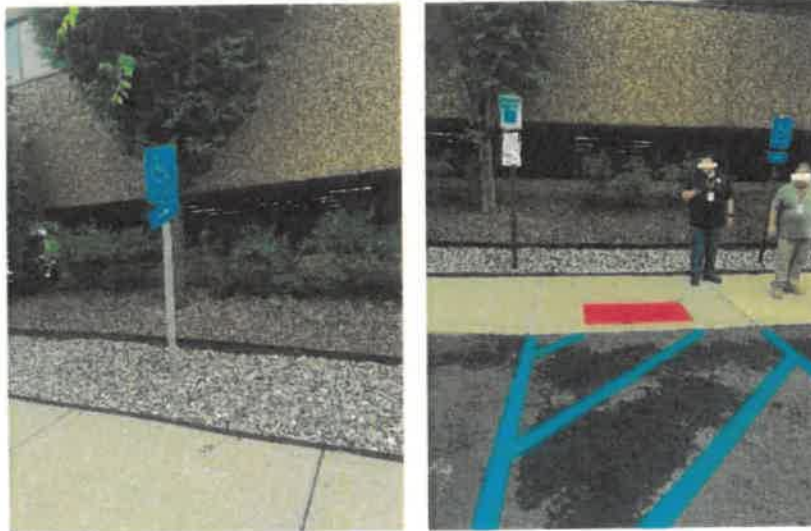
### **Accessible Approach/Entrance of Building:**

All individuals should be able to arrive on the site, approach the building, and have accessibility to facility. At least one route of travel should be safe and accessible for everyone, including those with disabilities.



**Exterior:****Parking and Passenger Loading Zones (ADAAG 4.6) *Completed***

- 1) An accessible parking sign will need to be tightened. Currently, part of the sign is off-centered.

**Interior:****Accessible Buildings: Alterations and Elevators (ADAAG 4.1.6, 4.10) *In process.***

*Elevator vendor is investigating*

- 2) The timing of the elevator doors is 6 seconds. The sensor to detect motion is malfunctioning. The elevator doors will need to be replaced and/or calibrated to comply with opening and closing times for ADA compliance.

**Signage (ADAAG 4.30)**

- 3) It is recommended that deaf individual(s) signage be installed on the first and second floors, near the elevator.

*Need more clarification for this request.*



(First Floor)



(Second Floor)

4) **ADA Room:**

ADA Rooms have been installed in all regional locations. They comply with the requirements of the ADA by ensuring accessible accommodations for those with disabilities to administer medication. The room is also designated to serve as a lactation/pumping station for mothers.

**Sinks (ADAAG 4.24)**

- Recommend installing a sink for sanitary purposes. *Complete.*



- 5) There is a hole in the carpet on the second floor which may pose a tripping hazard. It is recommended that the carpet/floor be repaired to comply with ADA accessibility standards. *Need specific location.*

**Completed**



**Mount Arlington Overall Recommendations:**

- 1) The elevator doors will need to be replaced and/or calibrated to comply with opening and closing timing for ADA compliance. *In process*
- 2) Install deaf individual(s) signage near elevators on the first and second floors. *Need more clarification.*
- 3) Install a sink in the ADA Room for sanitary purposes. *Complete.*
- 4) It is recommended that the carpet/floor on the second floor be repaired. *Complete*



## KNOWLTON TOURIST WELCOME CENTER/REST AREA



**July 14, 2023**

### **Accessible Approach/Entrance of Building:**

#### **Exterior:**

##### **Detectable Warnings (ADAAG 4.29) *Spring/Summer 2024 Construction***

- 1) There are four detectable warning surfaces (DWS) along the front of the building that should be replaced due to deterioration.

**Completed**

##### **Parking and Passenger Loading Zones (ADAAG 4.6)**

*Spring/Summer 2024 Construction*

- 2) Accessible parking spaces should be repainted.

**Completed**



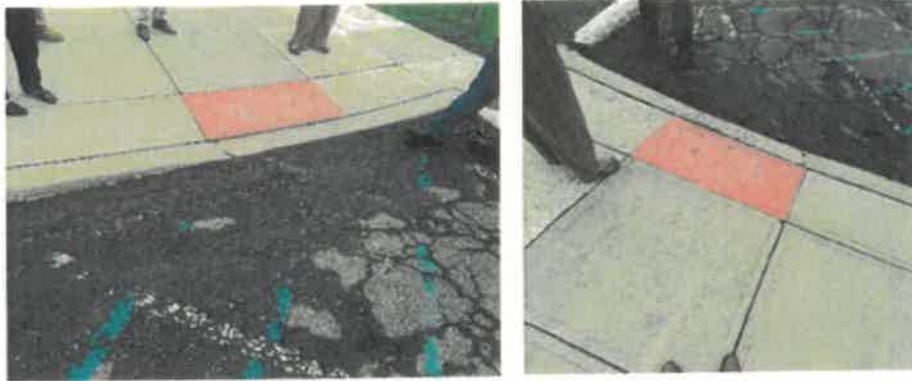
- 3) The overgrown vegetation needs to be treated across the entire facility. Specifically, the vegetation in between the sidewalk slabs in front of the building since this may pose a tripping hazard for pedestrians. **Complete.**



**Curb Ramps and Detectable Warnings (ADAAG 4.7, 4.29)** *Spring/Summer Construction*

**Completed**

- 4) The new ADA curb ramp near the accessible portable toilets will need to be extended, along with the DWS.



#### Doors (ADAAG 4.13)

- 5) The back entrance is non-compliant with current ADA requirements. The accessible push-button is currently not active. *In process, being addressed.*

**Completed**



## Interior:

### Rest Rooms:

#### **Toilet Stalls (ADAAG 4.17)**

- 6) Both women and men's rest room accessible stalls need to be extended outward to provide enough clear space for accessibility. *What are the requirements we are not meeting? Bathrooms were redone in 2019 and passed code for ADA compliance.*

Awaiting what the requirements are?



### Knowlton Rest Area Overall Recommendations:

- 1) Install 4 detectable warning surfaces (DWS) in front of the building. *Complete*
- 2) Restripe accessible parking spaces. *Complete*
- 3) Treat the overgrown vegetation across the entire facility. *Complete.*
- 4) Extend the curb ramp and DWS near the accessible portable toilets. *Complete*
- 5) Reactivate the accessible push-button for back entrance/exit. *Complete.*
- 6) Extend women and men's rest room accessible stalls to provide enough clear space for accessibility. *What are the requirements we are not meeting? Bathrooms were redone in 2019 and passed code for ADA.*



## CHERRY HILL SITE INSPECTION

September 20, 2023



**SOUTH REGION HEADQUARTERS**

### Accessible Approach/Entrance of Building:

#### **Exterior:**

##### **Doors (ADAAG 4.13)**

- 1) The front entrance door will need to be replaced and/or calibrated to comply with opening and closing forces for ADA compliance. (Recommended 7-10lbs. pressure for door closure) *In process of installing push buttons.*

Currently being worked on. Should be completed by Mid June.

**Complete**

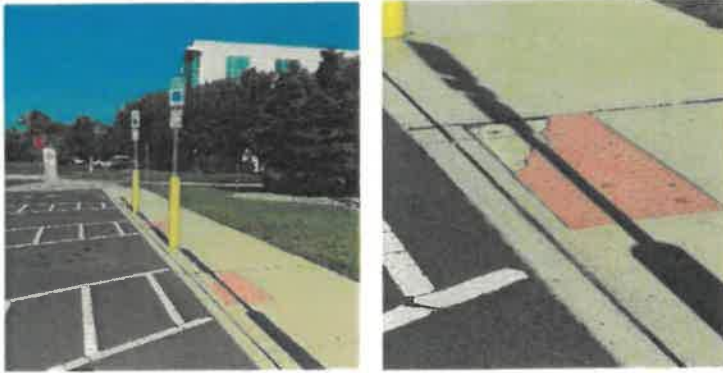
##### **Accessible Sites and Exterior Facilities (ADAAG 4.1.2) *Spring/Summer 2024***

**Still scheduled for this construction season**

- 2) DWS mat will be replaced, it is chipped and is starting to deteriorate.

**Completed**





- 3) The front of the building has chipped/damaged concrete pads which could be a potential tripping hazard. *Spring/Summer2024*

Still scheduled for this construction season

Completed



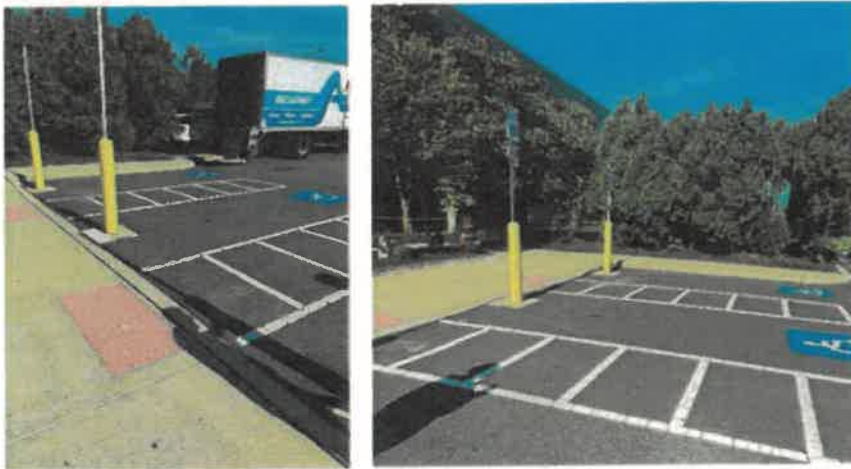


### **Parking and Passenger Loading Zones (ADAAG 4.6) *Spring/Summer2024***

- 1) The accessible parking spots in the rear of the building will be extended to 18ft (length) for compliance with ADA requirements.

*Still scheduled for this construction season*

**Completed**



### **Doors (ADAAG 4.13)**

- 2) The back entrance doors will need to be replaced and/or calibrated to comply with opening and closing forces for ADA compliance. The second set of doors of the back entrance need to be adjusted as well. *In process for ADA button. Doors are currently calibrated.*

*Contractor has PO, awaiting contractor install schedule*

**Completed**

### **Interior:**

- 3) The front entrance push-to-exit button is currently not working and should be replaced. *In process.*

*We have all parts and materials, awaiting contractor schedule*

**Completed**

- 4) The door to the lunchroom will need to be replaced and/or calibrated to comply with opening and closing forces for ADA compliance. *In process*

*Completed*

**Fixed or Built-in Seating and Tables (ADAAG 4.32)**

- 5) Facilities staff mentioned they would add a shelf on the wall in the ADA Room to provide a flat surface for medication, etc. *There is a table in there as a flat surface.*

*In process, should have this complete by June 7, 2024*

*Completed*

**Cherry Hill Overall Recommendations:**

- 1) Replace the front entrance door and/or calibrate to comply with opening and closing forces for ADA compliance. *Completed*
- 2) Replace DWS in front of the building. *Completed*
- 3) Resurface concrete pads in front of the building. *Completed*
- 4) Adjust accessible parking spots in the rear of the building to 18ft. *Completed*
- 5) Replace the back entrance door and/or calibrate to comply with opening and closing forces for ADA compliance. *Completed*
- 6) Reactivate the front entrance push-to-exit button. *Completed*
- 7) Replace the door to the lunchroom and/or calibrate to comply with opening and closing forces for ADA compliance. *Completed*
- 8) Install a shelf on the wall in the ADA/Lactation Room to provide a flat surface for individuals. *Completed*

## CARNEY'S POINT TOURIST WELCOME CENTER/ REST AREA



**August 23, 2023**

### Accessible Approach/Entrance of Building:

#### **Exterior:**

**Accessible Sites and Exterior Facilities (ADAAG 4.1.2)** *Push buttons in process.*

- 1) It is recommended that the front/back entrances be made accessible for all users. Accessible push-button doors will be installed for ADA accessibility.

Front entrance (car side) complete, back side (truck side), awaiting contractor start date for installation.

**Complete**



**Doors (ADAAG 4.13)**

- 2) There are two tripping hazards from outdated piping in front of the building in the concrete pads that should be repaired. *Spring/Summer 2024*

*Actively in construction, should be complete by mid June 2024*

**Complete**

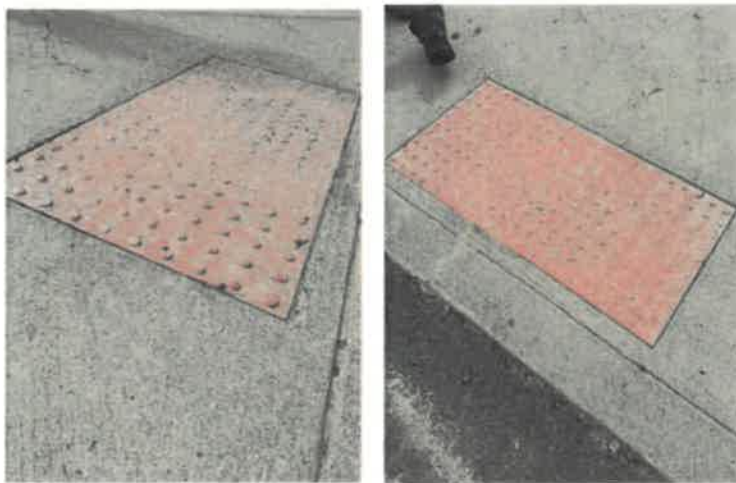


#### **Detectable Warnings (ADAAG 4.29)**

- 3) Detectable Warning Surfaces (DWS) in front of the building need to be replaced due to deterioration (2). There is one DWS in the back of the building that needs to be replaced as well. There are three DWS's in total that need to be replaced for compliance. *Spring/Summer 2024*

*Actively in construction, should be complete by mid June 2024*

**Complete**

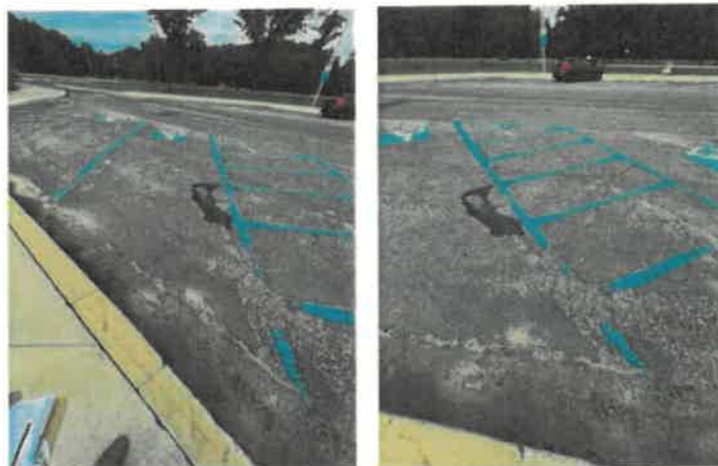




#### **Parking and Passenger Loading Zones (ADAAG 4.6)**

- 4) Accessible parking spaces need to be restriped. *Spring/Summer 2024*  
*Actively in construction, should be complete by mid June 2024*

**Complete**



#### **Slope (ADAAG 4.3.7)**

- 5) The concrete behind the second DWS in front of the building is steep for individuals using a wheelchair. *Spring/Summer 2024*  
*Actively in construction, should be complete by mid June 2024*

#### **Curb Ramps (ADAAG 4.7)**

- 6) It is recommended that the curb in front of the building be reconstructed to a depressed curb. Also, there will be yellow bollards placed around accessible parking signs (for protection and bright identification.) *Spring/Summer*  
*Actively in construction, should be complete by mid June 2024*

**Complete**



- 7) Handicap signs on the accessible portable toilets will be replaced for greater visibility. *Signs will be replaced for more visibility.*

**Completed**



#### **Fixed or Built-in Seating and Tables (ADAAG 4.32)**

- 8) There are no ADA compliant picnic tables on the grounds. Facilities will add two picnic tables that are ADA accessible. **Completed.**



#### **Interior:**

##### **Toilet Stalls (ADAAG 4.17)**

- 9) Accessibility sign should be installed on the women's rest room ADA stall. **Completed**



### Signage (ADAAG 4.30)

10) ADA signage should be installed outside of the women's rest room. *In process*

Signage should be in place by mid June 2024

**Completed**





**Carney's Point Rest Area Overall Recommendations:**



- 1) Resurface concrete pads in front of the building to eliminate tripping hazards. **Complete**
- 2) Replace the three DWS's that have been identified to comply with Accessibility Standards. **Complete**
- 3) Restripe accessible parking spots. **Complete**
- 4) Reconstruct the curb in front of the building into a depressed curb. **Complete**
- 5) Replace handicap signs on the accessible portable toilets. **Complete**
- 6) Add two accessible picnic tables. **Completed.**
- 7) Add accessible signs to women's rest room. (Entrance and ADA stall) **Complete**



## **APPENDIX H- NJDOT POLICIES AND PROCEDURES, COMPLETE STREETS**

**DEPARTMENT OF TRANSPORTATION  
POLICY**

Policy No. 703  
Supersedes: 703 dated  
8/7/89  
Page 1 of 3

SUBJECT: Complete Streets Policy	Effective Date  12/03/2009	Commissioner Approval:  Sponsor Approval: Robert Miller  Contact Telephone #: 530-3855
----------------------------------	----------------------------------	--

**I. PURPOSE**

To create and implement a Complete Streets Policy in New Jersey through the planning, design, construction, maintenance and operation of new and retrofit transportation facilities within public rights of way that are federally or state funded, including projects processed or administered through the Department's Capital Program.

**II. DEFINITIONS**

A Complete Street is defined as means to provide safe access for all users by designing and operating a comprehensive, integrated, connected multi-modal network of transportation options.

**III. BACKGROUND**

The benefits of Complete Streets are many and varied:

- Complete Streets improve safety for pedestrians, bicyclists, children, older citizens, non-drivers and the mobility challenged as well as those that cannot afford a car or choose to live car free.
- Provide connections to bicycling and walking trip generators such as employment, education, residential, recreation, retail centers and public facilities.
- Promote healthy lifestyles.
- Create more livable communities.
- Reduce traffic congestion and reliance on carbon fuels thereby reducing greenhouse gas emissions.
- Complete Streets make fiscal sense by incorporating sidewalks, bike lanes, safe crossings and transit amenities into the initial design of a project, thus sparing the expense of retrofits later.

**IV. POLICY**

The New Jersey Department of Transportation shall implement a Complete Streets policy through the planning, design, construction, maintenance and operation of new and retrofit transportation facilities, enabling safe access and mobility of pedestrians, bicyclists, transit users of all ages and abilities. This includes all projects funded through the Department's Capital Program. The Department strongly encourages the adoption of similar policies by regional and local jurisdictions who apply for funding through Local Aid programs.

**DEPARTMENT OF TRANSPORTATION  
POLICY**

Policy No. 703

Page 2 of 3

SUBJECT: NJDOT Complete Streets Policy

Effective Date:  
12/03/2009

1. Create a comprehensive, integrated, connected multi-modal network by providing connections to bicycling and walking trip generators such as employment, education, residential, recreational and public facilities, as well as retail and transit centers.
2. Provide safe and accessible accommodations for existing and future pedestrian, bicycle and transit facilities.
3. Establish a checklist of pedestrian, bicycle and transit accommodations such as accessible sidewalks curb ramps, crosswalks, countdown pedestrian signals, signs, median refuges, curb extensions, pedestrian scale lighting, bike lanes, shoulders and bus shelters with the presumption that they shall be included in each project unless supporting documentation against inclusion is provided and found to be justifiable.
4. Additionally, in rural areas, paved shoulders or a multi-use path shall be included in all new construction and reconstruction projects on roadways used by more than 1,000 vehicles per day. Paved shoulders provide safety and operational advantages for all road users. Shoulder rumble strips are not recommended when used by bicyclists, unless there is a minimum clear path of four feet in which a bicycle may safely operate. If there is evidence of heavy pedestrian usage then sidewalks shall be considered in the project.
5. Establish a procedure to evaluate resurfacing projects for complete streets inclusion according to length of project, local support, environmental constraints, right-of-way limitations, funding resources and bicycle and/or pedestrian compatibility.
6. Transportation facilities are long-term investments that shall anticipate likely future demand for bicycling and walking facilities and not preclude the provision of future improvements.
7. Address the need for bicyclists and pedestrians to cross corridors as well as travel along them. Even where bicyclists and pedestrians may not commonly use a particular travel corridor that is being improved or constructed, they will likely need to be able to cross that corridor safely and conveniently. Therefore, the design of intersections, interchanges and bridges shall accommodate bicyclists and pedestrians in a manner that is safe, accessible and convenient.
8. Design bicycle and pedestrian facilities to the best currently available standards and practices including the New Jersey Roadway Design Manual, the AASHTO Guide for the Development of Bicycle Facilities, AASHTO's Guide for the Planning, Design and Operation of Pedestrian Facilities, the Manual of Uniform Traffic Control Devices and others as related.

**DEPARTMENT OF TRANSPORTATION  
POLICY**

Policy No. 703

Page 3 of 3

SUBJECT: NJDOT Complete Streets Policy

Effective Date  
12/03/2009

9. Research, develop and support new technologies in improving safety and mobility.
10. Make provisions for pedestrians and bicyclists when closing roads, bridges or sidewalks for construction projects as outlined in NJDOT Policy #705 – Accommodating Pedestrian and Bicycle Traffic During Construction.
11. Improvements should also consider connections for Safe Routes to Schools, Safe Routes to Transit, Transit Villages, trail crossings and areas or population groups with limited transportation options.
12. Establish an incentive within the Local Aid Program for municipalities and counties to develop and implement a Complete Streets policy.
13. Improvements must comply with Title VI/Environmental Justice, Americans with Disabilities Act (ADA) and should complement the context of the surrounding community.
14. Implement training for Engineers and Planners on Bicycle/Pedestrian/Transit policies and integration of non-motorized travel options into transportation systems.
15. Establish Performance Measures to gauge success.

**V. EXEMPTIONS**

Exemptions to the Complete Streets policy must be presented for final decision to the Capital Program Screening Committee in writing by the appropriate Assistant Commissioner and documented with supporting data that indicates the reason for the decision and are limited to the following:

- 1) Non-motorized users are prohibited on the roadway.
- 2) Scarcity of population, travel and attractors, both existing and future, indicate an absence of need for such accommodations.
- 3) Detrimental environmental or social impacts outweigh the need for these accommodations.
- 4) Cost of accommodations is excessively disproportionate to cost of project, more than twenty percent (20%) of total cost.
- 5) The safety or timing of a project is compromised by the inclusion of Complete Streets.

An exemption other than those listed above must be documented with supporting data and must be approved by the Capital Program Committee along with written approval by the Commissioner of Transportation.

**VI. AUTHORITY**

N.J.S.A. Title 27

## **APPENDIX I - NJDOT POLICIES AND PROCEDURES, ACCOMMODATING PEDESTRIANS AND BICYCLE TRAFFIC DURING CONSTRUCTION**



## DEPARTMENT OF TRANSPORTATION POLICY

Policy No. 705

Supersedes: 1.4091

Page 1 of 5

<b>SUBJECT: Accommodating Pedestrian and Bicycle Traffic During Construction</b>	<b>Effective Date:</b> 01-03-2000	<b>Commissioner Approval:</b> James Weinstein  <b>Sponsor Approval:</b> Pippa Woods  <b>Contact Telephone #:</b> 530-8082
--	--------------------------------------	---

### I. PURPOSE

To establish a Policy in regard to accommodating pedestrian and bicycle traffic during construction.

### II. DEFINITIONS

N.A.

### III. POLICY

The Department is committed to increasing pedestrian and bicycle travel options by routinely integrating bicycle and pedestrian accommodations into transportation systems, and by promoting walking and bicycling as preferred travel modes for short trips. Under the Department's current procedures, bicycle and pedestrian needs and opportunities, (current and future), and the means by which those needs and opportunities are to be incorporated into projects, are identified during the planning and scoping phases of project development.

The Department's general bicycle and pedestrian policy obligates the Department to provide safe access for bicycle and pedestrian traffic during the construction phase of our capital improvements; however, it is recognized that construction related activities present an inconvenience and an impediment to the maintenance of traffic for all modes, including bicycle and pedestrian as well as motor vehicle traffic. It is not possible in all cases to spare the traveling public from such inconveniences and the resulting impediments to the maintenance of traffic during construction. The Department places a priority on the *completion* of permanent capital improvements that meet the needs of all lawful travel modes over the undertaking of costly and extraordinary measures during construction to maintain traffic for all modes. Such extraordinary measures not only consume scarce resources which could be used to implement permanent solutions to other needs, but they also could result in extending the duration of construction which extends construction related travel impacts to the traveling public and local stakeholders. A key means of mitigating construction related impacts for all modes is to lessen the duration of construction.

Decisions regarding the approach to maintain bicycle and pedestrian traffic during construction, as well as motorized traffic, will be made on a case by case basis to respond to the unique circumstances which are present for each and every project. They will be made in cooperation and consultation with affected

## Policy

No. 705

**SUBJECT:**  
**Accommodating Pedestrian and Bicycle Traffic**  
**During Construction**

**Effective Date:**  
01-03-2000

Page 2 of 5

residents and local public officials. Appropriate means of accommodating bicycle and pedestrian traffic during construction will be developed within the planning, scoping and design phases of project development and will become an integral element of the project construction plans.

In general,

- < Where construction activities affect a safe walking route to school, the Department will take aggressive measures to maintain safe accommodations for bicycle and pedestrian traffic during construction or will provide alternative means to ensure safe access for school and school related travel, e.g., accelerating construction schedules to complete construction during summer months when school is not in session.
- < Where there are pre-existing accommodations or facilities for bicycle and/or pedestrian traffic within the limits of a project, the Department will make every effort to maintain safe accommodations for bicycle and/or pedestrian traffic during construction where such efforts can be implemented at a reasonable cost and where those efforts will not unduly lengthen the duration of construction. Where unique circumstances render it infeasible to provide such accommodations, those unique circumstances shall be documented and alternative means for accommodating bicycle and pedestrian traffic through or around the construction area will be sought.
- < Where there are no pre-existing accommodations or facilities for bicycle and/or pedestrian traffic within the limits of a project, but there is evidence of pre-existing bicycle and/or pedestrian traffic, the Department will make every effort to maintain safe accommodations for bicycle and/or pedestrian traffic during construction where such efforts can be implemented at a reasonable cost and where those efforts will not unduly lengthen the duration of construction. Where circumstances render it infeasible to provide such accommodations, those circumstances shall be documented and reasonable alternative means for accommodating bicycle and pedestrian traffic through or around the construction area will be sought.
- < Where there are no pre-existing accommodations or facilities for bicycle and/or limited volumes of pedestrian traffic within the limits of a project, and it has been determined that there is no foreseeable demand or need to provide accommodations for bicycle and/or pedestrian travel as part of the project, then it would not be necessary to provide accommodations for bicycle and/or pedestrian traffic during construction.



## Policy

No. 705

**SUBJECT:**  
**Accommodating Pedestrian and Bicycle Traffic**  
**During Construction**

**Effective Date:**  
**01-03-2000**

**Page 3 of 5**

- < Where bicycle and/or pedestrian travel are prohibited by law or regulation within the project limits, it would not be necessary to maintain bicycle and/or pedestrian traffic during construction.

Decisions regarding the nature and extent of accommodations to be provided to maintain bicycle and pedestrian traffic during construction will be based on the following:

- < The volume of pedestrian and bicycle traffic.
- < The nature and purpose of the trips being made
- < The distance of current pedestrian trips through the intended construction area, and the distance of potential alternate routes (during construction) for pedestrians.
- < The setting or location of the improvement, e.g., urban, suburban, rural, and the extent to which local residents rely on bicycling for trip making or have alternative means of personal transportation available.
- < The existence or availability and distance of alternative routes.
- < The exposure to hazard for bicycle and pedestrian traffic (traffic hazards and personal security) associated with alternative routes or alternative accommodations.
- < The cost associated with accommodations to maintain bicycle and pedestrian traffic (attributed solely to the maintenance of bicycle and pedestrian travel) as a proportion of total construction costs.
- < The absolute cost associated with accommodations to maintain bicycle and pedestrian traffic (attributed solely to the maintenance of bicycle and pedestrian travel).
- < The duration of construction, and, consequently, the duration of construction related traffic impacts.

## Policy

No. 705

<b>SUBJECT:</b> <b>Accommodating Pedestrian and Bicycle Traffic During Construction</b>	<b>Effective Date:</b> 01-03-2000	<b>Page 4 of 5</b>
--	--------------------------------------	--------------------

- < Whether the duration of construction could be substantially shortened if accommodations to maintain pedestrian and bicycle traffic during construction were dispensed with, e.g., closing a facility entirely and compressing construction to three months or less.
- < The nature of the disruption or impacts to the local community, both social and economic, resulting from cessation of bicycle and pedestrian traffic during construction.

Measures considered for accommodating bicycle and pedestrian traffic during construction may include (but not be limited to) individually or in combination, the following:

- < Maintaining a protected travel path, either a pre-existing accommodation or a temporary accommodation, through the construction zone within existing right of way.
- < Maintaining access by staging construction in a way that provides a partial permanent (new) pedestrian/bicycle accommodation during portions of the construction.
- < Maintaining access by establishing a temporary protected travel path around the construction area through easements.
- < Establishing alternative routes of a reasonable length and directing bicycle and/or pedestrian traffic to those routes.
- < Providing alternate locations for the storage of construction materials or equipment to enable the establishment of a protected travel path for bicycle or pedestrian traffic through the construction zone within existing right of way.
- < Constructing separate temporary facilities such as a pedestrian and/or bicycle bridge to be utilized until permanent bicycle or pedestrian accommodations are completed.
- < Providing, paying for or subsidizing shuttle services.

## Policy

No. 705

**SUBJECT:**  
**Accommodating Pedestrian and Bicycle Traffic**  
**During Construction**

**Effective Date:**  
01-03-2000

Page 5 of 5

### IV. AUTHORITY

N.J.S.A. Title 27

## **APPENDIX J - TECHNICALLY INFEASIBLE FORM (TIF-1)**

NEW JERSEY DEPARTMENT  
OF TRANSPORTATION**ADA Technically Infeasible Form**

(Form used to document design decisions for non-compliance of pedestrian facilities)

**Project Information**

Submission Date: \_\_\_\_\_  
 Project Name: \_\_\_\_\_  
 Route Number: \_\_\_\_\_  
 UPC Number: \_\_\_\_\_  
 Mile Post Limits: \_\_\_\_\_

Municipality: \_\_\_\_\_  
 County: \_\_\_\_\_  
 Project Manager: \_\_\_\_\_  
 Designer: \_\_\_\_\_  
 Project Type: \_\_\_\_\_

**Existing Conditions at Curb Ramp Location**

Field Inspection Date: \_\_\_\_\_

(Check all that apply)

- |   |  |
|---|--|
| <input type="checkbox"/> Curb Ramp          | <input type="checkbox"/> Driveway              |
| <input type="checkbox"/> Sidewalk           | <input type="checkbox"/> Pedestrian Pushbutton |
| <input type="checkbox"/> Crosswalk          | <input type="checkbox"/> DWS present           |
| <input type="checkbox"/> Stop/Yield Control | <input type="checkbox"/> "No Peds" Sign        |
| <input type="checkbox"/> Traffic Signal     | <input type="checkbox"/> Decorative Pavers     |

Provide information below:

Curb Height: \_\_\_\_\_ Sidewalk Width: \_\_\_\_\_  
 Distance to Ped Pushbutton from Edge of Ramp: \_\_\_\_\_  
 Distance to Ped Pushbutton from Gutter line: \_\_\_\_\_  
 Height of Ped Pushbutton from Sidewalk: \_\_\_\_\_

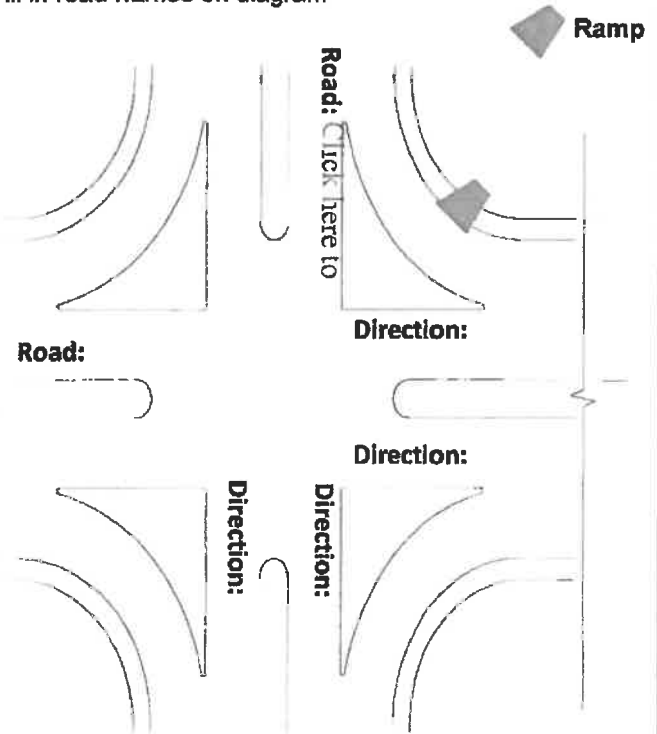
**Attach Existing Conditions Photos****Justification for Technically Infeasible**

- ☐ Existing Utilities Specify: \_\_\_\_\_  
☐ Structures, Bldg, Vaults  
☐ Environmental Impacts  
☐ Historic Impacts  
☐ Safety  
☐ Roadway Profile Slope (Terrain)  
☐ Excess Exposure of Pole Foundations  
☐ Utility Pole  
☐ Manhole  
☐ Traffic Signal Pole  
☐ Junction Box  
☐ Stormwater Inlet

**Location Identification**

Curb Ramp location (draw on intersection below)

Fill in road names on diagram

**Requirements Not Met**

- ☐ Ramp Longitudinal Slope  
☐ If 15' Rule Applied, Specify Grade: \_\_\_\_\_  
☐ Sidewalk Cross Slope  
☐ Ramp Flares Slope  
☐ 4' x 4' Clear Space Dimensions  
☐ Turning Space Dimensions  
☐ Turning Space Slopes  
☐ Pedestrian Pushbutton Location  
☐ Other: \_\_\_\_\_ Detectable warning surface

**Explanation of Why Requirements Could Not Be Met****Attach Sketch of Proposed Curb Ramp (Best Fit) or ROW Layout**



## ADA Technically Infeasible Form (TIF) Instructions

The Technically Infeasible Form will be used for existing sites where it is technically infeasible to construct pedestrian facilities to fully meet current NJDOT standards. Ensure that this determination is made based on the impact aspects that are required in order to fully meet standards, and not the cost aspects. Specify each individual non-compliant curb ramp on a separate form. At the latest, this form must be submitted as part of the Final Design Submission (FDS).

Project type and scope will determine when existing site constraints justify the use of the Technically Infeasible Form. In certain situations, existing site constraints may justify the use of a design that provides access to the maximum extent feasible if removing the existing site constraints would require additional work that is not included as part of the project scope. See RDM - Section 5.

### Project Information

Provide Submission Date, Project Name, Route Number, UPC, Federal Project Number, Mile Post Limits, Municipalities, Counties, Project Manager and Designer. Select Project Type from the pull down list provided. Project Types include New Construction, Reconstruction, Major Rehabilitation, Widening, Resurfacing, Signal Installation, and Pedestrian Signal Installation/Major Upgrades.

### Existing Conditions

Provide field inspection date, date when existing conditions were observed. Check all the existing conditions that apply at facility location. Also provide the following information: Curb Height, Sidewalk Width, Distance to Pedestrian Pushbutton from gutter line and Height of Pedestrian Pushbutton from sidewalk.

### Photos

Select appropriate, illustrative existing photographs to be included and attach.

### Justification for Technically Infeasible

Provide justifications for technical infeasibility apply for the investigated facility (there can be more than one option checked). Items checked should not be included in the scope of the project.

### Requirements Not Met

Provide ADA requirements that cannot be met as a result of the technically infeasible issues that were identified. In order not to chase the grade indefinitely, the curb ramp running slope should not exceed 15 feet. This is known as the 15' Rule. Specify the running slope achieved.

### Explanation of Why Requirements Could Not Be Met

Provide a detailed description of the best fit curb ramp selected and the specific reasons that the ADA requirements could not be achieved (site constraints, physical terrain, etc.). Also specify if pedestrian pushbutton locations are not met as per the MUTCD.

### Location Identification

Provide curb ramp location by drawing in the location of the curb ramp by hand or by moving and rotating the ramp symbol shown in blue. Also fill in the Main Road Route No. and Direction and Cross Road Name and Direction on the diagram.

### Submission

Submit a hard copy and an electronic copy to NJDOT Roadway Standards. If there are any concerns, comments will be submitted to the designer.

**APPENDIX K - PEDESTRIAN AND BICYCLE FUNDING  
OPPORTUNITIES: US DEPARTMENT OF  
TRANSPORTATION TRANSIT, SAFETY AND HIGHWAY  
FUNDS, SEPTEMBER 9, 2022**

# Pedestrian and Bicycle Funding Opportunities: U.S. Department of Transportation Transit, Safety, and Highway Funds

September 9, 2022

This table indicates potential eligibility for pedestrian and bicycle activities and projects under U.S. Department of Transportation surface transportation funding programs. Activities and projects need to meet program eligibility requirements. See notes and basic program requirements below, with links to program information. Project sponsors should integrate the safety, accessibility, equity, and convenience of walking and bicycling into surface transportation projects.

		Pedestrian and Bicycle Funding Opportunities: U.S. Department of Transportation Transit, Safety, and Highway Funds																													
		Key: \$ = Activity may be eligible. Restrictions may apply; see program notes and guidance. -5 = eligible, but not competitive unless part of a larger project.																													
Activity or Project Type		OST Programs					Federal Transit					Federal Highway Administration																			
		RAISE	NHTSA	RCP	SSA	Thrive	NRT	TIFA	PTA	ATF	TOD	AOPF	402	403	BIF	CRP	CMAQ	ESRP	RACE	MHP	PBO	STBG	TA	KTP	SRTS	PLAN	NSBP	TTT	TTT	TTT	TTT
Access enhancements to public transportation (benches, bus pads)		\$	\$	\$	\$	\$	-5	-5	\$	\$	-5				\$	\$											\$	\$	\$	\$	\$
Americans with Disabilities Act (ADA)/504 Self Evaluation / Transition Plan						TA				\$	\$				\$												\$	\$	\$	\$	\$
Barrier removal for ADA compliance		\$	\$	\$	\$		-5	-5	\$	\$	-5				\$	\$											\$	\$	\$	\$	\$
Bicycle plans																															
Bicycle helmets (project or training related)																															
Bicycle helmets (safety promotion)																															
Bicycle lanes on road		-5	-5	\$	\$		-5	-5	\$	\$	-5				\$	\$											\$	\$	\$	\$	\$
Bicycle parking (see bicycle parking Solutions)		-5	-5	\$	\$		-5	-5	\$	\$	-5				\$	\$											\$	\$	\$	\$	\$
Bike racks on transit		-5	-5	\$	\$		-5	-5	\$	\$	-5				\$	\$											\$	\$	\$	\$	\$
Bicycle repair station (air pump, simple tool, /		-5	-5	\$	\$		-5	-5	\$	\$	-5				\$	\$											\$	\$	\$	\$	\$
Bicycle share (capital and equipment; not operations)		-5	-5	\$	\$		-5	-5	\$	\$	-5				\$	\$											\$	\$	\$	\$	\$
Bicycle storage at service centers (example: at transit nodes)		-5	-5	\$	\$		-5	-5	\$	\$	-5				\$	\$											\$	\$	\$	\$	\$
Bridges / overcrossing for pedestrians and/or bicyclists		\$	\$	\$	\$		-5	-5	\$	\$	-5				\$	\$											\$	\$	\$	\$	\$
Bus shelters and benches		\$	\$	\$	\$		-5	-5	\$	\$	-5				\$	\$											\$	\$	\$	\$	\$
Coordinator positions (State or local) (funds on CMAQ and STBG)						TA																									
Community Capacity Building (develop organizational skills/processes)																															
Crosswalks for pedestrians, pedestrian refuge islands (new or retrofit)		\$	\$	\$	\$		-5	-5	\$	\$	-5				\$	\$											\$	\$	\$	\$	\$
Curb ramps		\$	\$	\$	\$		-5	-5	\$	\$	-5				\$	\$											\$	\$	\$	\$	\$
Countdown equipment																															
Data collection and monitoring for pedestrians and/or bicyclists		\$	\$	\$	\$		-5	-5	\$	\$	-5				\$	\$											\$	\$	\$	\$	\$
Emergency and evacuation routes for pedestrians and/or bicyclists		\$	\$	\$	\$		-5	-5	\$	\$	-5				\$	\$											\$	\$	\$	\$	\$
Historic preservation (pedestrian and bicycle and transit facilities)		-5	-5	\$	\$		-5	-5	\$	\$	-5				\$	\$											\$	\$	\$	\$	\$
Landscaping, streetcapping (pedestrian/bicycle route, transit access); related amenities (benches, water fountain); usually part of larger project		-5	-5	-5	-5		-5	-5	\$	\$	-5				\$	\$											\$	\$	\$	\$	\$
Lighting (pedestrian and bicyclist scale associated with pedestrian/bicyclist project)		\$	\$	\$	\$		-5	-5	\$	\$	-5				\$	\$											\$	\$	\$	\$	\$
Maps (for pedestrians and/or bicyclists)																															
Micro-mobility project (including scooter share)		\$					-5	-5	\$	\$	-5				\$	\$											\$	\$	\$	\$	\$
Paved shoulders for pedestrian and/or bicyclist use		\$	-5	\$	\$		-5	-5							\$	\$											\$	\$	\$	\$	\$
Pedestrian plans		\$	-5	-5	\$																						\$	\$	\$	\$	\$
Rail at grade crossings		\$	\$	\$	\$										\$	\$											\$	\$	\$	\$	\$
Recreational trails		\$	\$	\$	\$										\$	\$											\$	\$	\$	\$	\$
Resilience improvements for pedestrians and bicyclists		\$	\$	\$	\$		-5	-5							\$	\$											\$	\$	\$	\$	\$
Road Diets (pedestrian and bicycle portions)		\$	\$	\$	\$		-5	-5	\$	\$	-5				\$	\$											\$	\$	\$	\$	\$



**Pedestrian and Bicycle Funding Opportunities: U.S. Department of Transportation Transit, Safety, and Highway Funds**

**Key: \$ - Activity may be eligible. Restrictions may apply, see program notes and guidance. - \$ - Eligible, but not competitive unless part of a larger project**

Activity or Project Type	RAISE	INRA	RCP	SS4A	Inter	RR	THIA	ETIA	AT	TOD	ADPF	402	405	BEP	CRP	CMAO	HSR	RHCP	NHPP	PRQ	STBG	TA	RTP	SRIS	PLAN	NSRP	ELTTP	TTP	TPSE
Road Safety Assessment for pedestrians and bicyclists			\$	\$	TA		- \$				- \$						\$	\$			\$	\$				\$	\$	\$	
Safety education and awareness activities and programs to inform pedestrians, bicyclists, and motorists on ped/bike traffic safety laws				\$							- \$	\$	\$				\$				\$SRIS	\$SRIS				\$	\$	\$	
Safety education positions				\$							- \$	\$	\$								\$SRIS	\$SRIS				\$	\$	\$	
Safety enforcement (including police patrols)				\$							- \$	\$	\$				\$				\$SRIS	\$SRIS				\$	\$	\$	
Safety program technical assessment (for ped/bicyclists)			\$	- \$	TA						- \$	\$					\$	\$	\$		\$SRIS	\$SRIS				\$	\$	\$	
Separated bicycle lanes			\$	\$			- \$		\$	\$	- \$			\$	\$		\$	\$	\$	\$	\$	\$				\$	\$	\$	
Shared use paths / transportation trails			\$	\$			- \$		\$	\$	- \$			\$	\$		\$	\$	\$	\$	\$	\$				\$	\$	\$	
Sidewalks (new or retrofit)			\$	\$			- \$		\$	\$	- \$			\$	\$		\$	\$	\$	\$	\$	\$				\$	\$	\$	
Signs, signals, signal improvements (incl accessible pedestrian signals)			\$	\$			- \$		\$	\$	- \$			\$	\$		\$	\$	\$	\$	\$	\$				\$	\$	\$	
see note																													
Signing for pedestrian or bicycle routes			\$	\$			- \$		\$	\$	- \$			\$	\$		\$	\$	\$	\$	\$	\$				\$	\$	\$	
Spot improvement programs (for pedestrian and bicycle facilities)			\$	\$			- \$		\$	\$	- \$			\$	\$		\$	\$	\$	\$	\$	\$				\$	\$	\$	
Stormwater impacts related to pedestrian and bicycle project impacts			\$	\$			- \$		\$	\$			\$				\$	\$	\$	\$	\$	\$				\$	\$	\$	
Traffic calming			\$	\$			- \$		\$	\$				\$	\$		\$	\$	\$	\$	\$	\$				\$	\$	\$	
Trail badges			\$	\$			- \$		\$	\$				\$	\$		\$	\$	\$	\$	\$	\$				\$	\$	\$	
Trail construction and maintenance equipment			\$	- \$			- \$		\$	\$				\$	\$		\$	\$	\$	\$	\$	\$				- \$	- \$	- \$	
Trail/bike/crossing and intersections			\$	\$			- \$		\$	\$	- \$			\$	\$		\$	\$	\$	\$	\$	\$				\$	\$	\$	
Trailside/trailhead facilities (restrooms water work amenities)			- \$				- \$		\$	\$				\$	- \$		\$	\$	\$	\$	\$	\$				\$	\$	\$	
Training					TA						- \$	\$					\$	\$	\$	\$	\$SRIS	\$SRIS				\$	\$	\$	
Training for law enforcement on ped/bicyclist safety laws				- \$								\$	\$				\$	\$	\$	\$	\$SRIS	\$SRIS				\$	\$	\$	
Tunnels / underpasses for pedestrians and/or bicyclists			\$	\$										\$	\$		\$	\$	\$	\$	\$	\$				\$	\$	\$	
Vulnerable Road User Safety Assessment			\$	\$	TA									\$	\$		\$	\$	\$	\$	\$	\$				\$	\$	\$	

## Cross-cutting notes

This table indicates potential eligibility for pedestrian, bicycle, and micromobility activities and projects under U.S. Department of Transportation surface transportation funding programs. Activities and projects must meet program eligibility requirements. See notes and links to program information below. Although the primary focus of this table is stand-alone activities and projects, programs also fund pedestrian and bicycle facilities as part of larger projects. Project sponsors are encouraged to consider Complete Streets and Networks that routinely integrate the safety, accessibility, equity, and convenience of walking and bicycling into surface transportation projects. In these instances, the Federal-aid eligibility of the pedestrian and bicycle elements are considered under the eligibility criteria applicable to the larger highway project. Pedestrian and bicycle activities also may be characterized as environmental mitigation for larger highway projects, especially in response to impacts to a Section 4(f) property or work zone safety, mobility, and accessibility impacts on bicyclists and pedestrians.

- See FHWA Bicycle and Pedestrian Planning, Program, and Project Development (Guidance)
- Bicycle Project Purpose: 23 U.S.C. 217(f) requires that bicycle facilities “be principally for transportation, rather than recreation, purposes”. However, 23 U.S.C. 133(b)(7) and 133(b) authorize recreational trails under STBG and the TA Set-Aside, therefore, 23 U.S.C. 217(f) does not apply to trail projects (including for bicycle use) using STBG or TA Set-Aside funds. Section 217(f) applies to bicycle facilities other than trail-related projects, and section 217(f) applies to bicycle facilities using other programs (NHEP, HSRE, SMAO). The transportation requirement under section 217(f) only applies to bicycle projects, not to any other trail use or transportation mode.
- Signs, signals, signal improvements includes ensuring accessibility for persons with disabilities. See Accessible Pedestrian Signals. See also Proven Safety Countermeasures, such as Crosswalk Visibility Enhancements, Leading Pedestrian Interval signals, Pedestrian Hybrid Beacons, and Rectangular Rapid Flashing Beacons.
- Occasional DOT or agency incentive grants may be available for specific research or technical assistance purposes.
- Aspects of DOT initiatives may be eligible as individual projects. Activities above may benefit safe, comfortable, multimodal networks; environmental justice; and equity.
- The DOT Navigator is a resource to help communities understand the best ways to apply for grants, and to plan for and deliver transformative infrastructure projects and services.
- FHWA’s Policy on Using Bipartisan Infrastructure Law Resources to Build a Better America.
- FHWA Links to Technical Assistance and Local Support.

## Program-specific notes

- Federal-aid and other DOT funding programs have specific requirements that projects must meet, and eligibility must be determined on a case-by-case basis. See links to program guidance for more information.
- RAISE (Infrastructure Investment and Jobs Act (Pub. L. 117-58) (IIJA), also known as the Bipartisan Infrastructure Law (BIL), § 21202): Funds capital and planning grants.
- INREZA (IIJA § 11110): For projects that improve safety, generate economic benefits, reduce congestion, enhance resiliency, and hold the greatest promise to eliminate freight bottlenecks and improve critical freight movements.
- RCEP (IIJA § 11509 and div. 1, title VIII, Highway Infrastructure Programs, para. (7)): See RCEP Program Notice of Funding Opportunity for full details. Planning grants and Capital Construction Grants must relate to a transportation facility that creates a barrier to community connectivity.
- SS4A (IIJA § 24112): Discretionary program funds regional, local, and Tribal initiatives through grants to prevent roadway deaths and serious injuries. Projects must be identified in a comprehensive safety action plan (§ 24112(a)(3)).
- Thrive (Department of Transportation Appropriations Act, 2022 (Pub. L. 117-103, div. 1, title I): Technical assistance, planning, and capacity-building support in selected communities.
- RRIF (Chapter 224 of title 40 U.S.C.): Program offers direct loans and loan guarantees for capital projects related to rail facilities, stations, or crossings. Pedestrian and bicycle infrastructure components of “economic development” projects located within ½-mile of qualifying rail stations may be eligible. May be combined with other grant sources.
- TRF (“chapter 6 of title 23 U.S.C.): Program uses ... loans, loan guarantees, or standby lines of credit for capital projects. Minimum total project size is \$10 million; multiple surface transportation projects may be bundled to meet ... threshold, under the condition that all projects have a common repayment pledge. May be combined with other grant sources, subject to total Federal assistance limitations.
- FTA/ATI (49 U.S.C. 5307): Multimodal projects funded ... by FTA transit funds must provide access to transit. See Bicycles and Transit: Flex Funding for Transit Access; the FTA Final Policy Statement on the Eligibility of Pedestrian and Bicycle Improvements Under Federal Transit Law, and FTA Live ... & Bicycle Related Funding Opportunities.
- Bicycle infrastructure plans and projects must be within a 3-mile radius of a transit stop or station. If more than 3 miles, within a distance that people could be expected to safely and conveniently bike to the particular stop or station.
- FTA funds cannot be used to purchase bicycles for bike share systems.
- FTA TOD: Provides planning grants to support community efforts to improve safe access to public transportation for pedestrians and cyclists. The grants help organizations plan for transportation projects that connect communities and improve access to transit and affordable housing, not for capital purchases.
- FTA ADPP (Further Consolidated Appropriations Act, 2020 (Pub. L. 116-94): Consolidated Appropriations Act, 2021 (Pub. L. 116-260)): Promotes multimodal planning, engineering, and technical studies, or financial planning to improve transit services in areas experiencing long-term economic distress, not for capital purchases.
- NHTSA 402 (23 U.S.C. 402): Project activity must be included in the State’s Highway Safety Plan. Contact the State Highway Safety Office for details.
- NHTSA 403 (23 U.S.C. 403): Funds are subject to eligibility, application, and award. Project activity must be included in the State’s Highway Safety Plan. Contact the State Highway Safety Office for details. The Bipartisan Infrastructure Law expanded the eligible use of funds for a Section 405 Nonmotorized Safety grant beginning in FY 2024; however, for FY 2023 grants, RASST Act eligible uses remain in place.
- BEP (IIJA, Div. 1, title VIII, para. (1)), BEP (23 U.S.C. 124) BRK (Department of Transportation Appropriations Act, 2022): For specific highway bridge projects and highway bridge projects that will replace or rehabilitate a bridge must consider pedestrian and bicycle access as part of the project and costs related to their inclusion are eligible under these programs.
- CRR (23 U.S.C. 175): Projects should support the reduction of carbon dioxide emissions from on-road highway sources.

- CMAQ (23 U.S.C. 149): Projects must demonstrate emissions reduction and benefit air quality. See the CMAQ guidance at [www.fhwa.dot.gov/environment/air\\_quality/cmaq/](http://www.fhwa.dot.gov/environment/air_quality/cmaq/) for a list of projects that may be eligible for CMAQ funds. CMAQ funds may be used for shared use paths, but not for trails that are primarily for recreational use.
- HSIP (23 U.S.C. 148): Projects must be consistent with a State's Strategic Highway Safety Plan and (1) correct or improve a hazardous road location or feature, or (2) address a highway safety problem. Certain non-infrastructure safety projects can also be funded using HSIP funds as specified safety projects.
- RHCP (23 U.S.C. 130): Projects at all public railroad crossings including roadways, bike trails, and pedestrian paths.
- NHBP (23 U.S.C. 119): Projects must benefit National Highway System (NHS) corridors and must be located on land adjacent to any highway on the National Highway System (23 U.S.C. 217(b)).
- PROTECT (23 U.S.C. 176): Funds can only be used for activities that are primarily for the purpose of resilience or inherently resilience related. With certain exceptions, the focus must be on supporting the incremental cost of making assets more resilient.
- STBG (23 U.S.C. 133) and TA Set-Aside (23 U.S.C. 133(b)): Activities marked "SRTS" means eligible only as an SRTS project benefiting schools for kindergarten through 12<sup>th</sup> grade. Bicycle transportation nonconstruction projects related to safe bicycle use are eligible under STBG, but not under TA (23 U.S.C. 217(a)). There is broad eligibility for projects under 23 U.S.C. 206, 208, and 217.
- RTP (23 U.S.C. 206): Projects for trails and trailhead facilities for any recreational trail use. RTP projects are eligible under TA Set-Aside and STBG.
- SRTS (23 U.S.C. 208): Projects for any SRTS activity. FY 2012 was the last year for dedicated - funds, but funds are available until expended. SRTS projects are eligible under TA Set-Aside and STBG.
- PLAN (23 U.S.C. 134 and 135): Funds must be used for planning purposes, for example: Maps; System maps and GIS; Safety education and awareness; for transportation safety planning; Safety program technical assessment for transportation safety planning; Training; bicycle and pedestrian system planning training.
- NSBP (23 U.S.C. 162): Discretionary program subject to annual appropriations. Projects must directly benefit and be close to a designated scenic byway.
- ELITP (23 U.S.C. 201-204): Projects must provide access to or within Federal or tribal lands. Programs include: Federal Lands and Tribal Transportation Programs (Federal Lands Access Program, Federal Lands Transportation Program, Federal Lands Planning Program) and related programs for Federal and Tribal lands such as the Nationally Significant Federal Lands and Tribal Projects (NSFLTP) program.
  - o Federal Lands Access Program (FLAP) (23 U.S.C. 203): For Federal agencies for projects that provide access within Federal lands.
  - o Federal Lands Transportation Program (FLTP) (23 U.S.C. 204): For State and local entities for projects that provide access to or within Federal or tribal lands.
- ITP (23 U.S.C. 202): For federally-recognized tribal governments for projects within tribal boundaries and public roads that access tribal lands.
- ITPSF (23 U.S.C. 202(e)(1) and 23 U.S.C. 148(e)(4)): Grants available to federally-recognized Indian tribes through a competitive, discretionary program to plan and implement transportation safety projects.